

BARR BEACON SIXTH FORM



PROSPECTUS 2025



Matrix
Academy Trust

EDUCATION WITHOUT EXCEPTION



OUR VISION

“We are very proud of our Sixth Form students who serve as role models for our younger pupils whether this be in the way that they dress professionally and with pride for themselves or in the ambassadorial roles that they take on.”

By choosing to apply to Barr Beacon Sixth Form you are selecting an environment which will prepare you for the world beyond Key Stage 5. We strive for excellence in everything that we do for our students from the learning provision to the opportunities beyond the classroom that contribute to our students being amongst the very best ready to take on the next step of their career with confidence, self-belief and experience.

We are very proud of our Sixth Form students who serve as role models for our younger pupils whether this be in the way that they dress professionally and with pride for themselves or in the ambassadorial roles that they take on during their time with us whether as Charity Managers, Subject Ambassadors, House Captains or Head Students.



We expect outstanding attendance, effort and presentation of your work and yourselves. You will select Barr Beacon if you have a desire to succeed and learn amongst like-minded students.

By joining our Sixth Form you are agreeing to work hard – we have high expectations of our learners from the moment you start on the induction days to the last assessment that you complete in Year 13.

Our drive for your success will be at the forefront of the lessons taught and the opportunities afforded to every successful applicant to Barr Beacon Sixth Form. You will be taught by experts in their field, offered chances to travel internationally and informed about careers and pathways that leave you well-versed and able to make educated choices.

You will hear from our Alumni who will share stories of their achievements from Oxbridge graduates to entrepreneurs, all of whom started their careers at Barr Beacon School.

We celebrate success and reward hard work; we will support you to grow into young adults. We recognise that this is a new and exciting time in your development and one where you will need assistance from time to time. With our dedicated and experienced team, we will help you to navigate your way through the changing horizon that Key Stage 5 brings whilst also guiding you to become resilient to take on the next steps.

There are many choices available to you now and this is the exciting part of life after Key Stage 4. We offer a wide range of A Levels and BTECs. This year we are also offering the new AAs. All of our courses give significant currency with universities and apprenticeship providers.

Barr Beacon Sixth Form isn't for everyone – it is important that you make the right decision about where you want to study. This prospectus has been designed to help you to make informed choices. The next step after making your application is a personalised interview with a member of the Sixth Form Team. Prepare yourself well for this to demonstrate what you can bring to our Sixth Form.

Every second counts between now and your Key Stage 4 assessments. Make the most of what support is on offer to you and good luck. I look forward to welcoming you into Year 12 as part of cohort of 2025.

Yours sincerely,



**YOUR
JOURNEY
STARTS HERE**

JOIN US

TO JOIN US YOU WILL NEED:

GCSE Mathematics at grade 5 or above

GCSE English (Language or Literature) at grade 5 or above

4 other subjects at grade 4 or above (this includes BTECs at Merit or Distinction)

There are also subject prerequisites for some courses. See the course pages in this prospectus for more information.

EXPECTATIONS

To be successful in their studies, students need to be organised, manage their time well and become independent learners.

They are expected to do at least 15 hours independent study per week as well as engage in wider reading for their chosen subjects. All Sixth Form students are issued with a diary to support them with managing their time effectively.

Whilst we encourage volunteering and relevant work experience, Sixth Formers must not take on many hours of paid work.

Students are expected to attend school every day for the whole day (8.35am until at least 3.10pm). Students whose attendance falls below 95% will be interviewed by a member of the Sixth Form Team.



WORKING TOGETHER

TO MONITOR YOUR CHILD'S **PROGRESS**

Although Sixth Formers are expected to work very independently, we never underestimate the important role parents and carers continue to play in the academic success of their children. The homework may be harder than it was in Year 11, but that does not mean you won't be wanting to continue doing everything you possibly can to support them.

You will be expecting the same from us as well – and that is exactly what you will get. All of our students are carefully monitored. Your child's well-being is of paramount importance to us, both personally and academically. It is highly likely that your child will find the jump to Sixth Form study a challenge and they will need support and guidance to adjust to the increased demands on them.

If we become concerned that your child is at risk of underperforming, we will be in touch – and we expect you to get in touch with us if you have similar concerns.

MEET OUR HEAD STUDENTS



Head Student | T. Hunt

I am incredibly honoured to have received the title of Head Student, but this is not just a title to me but rather a commitment to serve, represent and uplift our student body and foster my vision to create a supportive, accepting and forward-thinking environment within school. I aim to promote further opportunities for students to embrace on their journey to reach their greatest ambitions.



The experiences and opportunities that have been presented to me at Barr Beacon School have shaped me in ways I could never have predicted, and it is because of these that, as I step into the role of Head Student, I can assure you that I will endeavour to give back to the school community and continue to foster an environment where people feel encouraged to achieve their aspirations, just as I have. As I reflect on the experiences I have been granted and remember those who inspired me, I feel a profound sense of responsibility to become the role model for younger students as they begin their journey and set their sights on reaching their full potential.

My passion for this role, and my unwavering desire to help people, drives my initiatives and dedication to make a meaningful impact that hopefully, after I pass on the badge next year, will be a lasting legacy added to a long list of accomplishments of the Head Students before me.

Head Student | K. Bynoe

Since the beginning of my journey at Barr Beacon School I have always had uncertainties about where I want to find myself in the future. However, I have always known the person who I want to be and the impact that I want to have on others. I was given an environment in which I could not only excel academically but as an individual too, allowing me to learn the great significance of leadership, empathy and success. With the ability to act as a liaison between faculty and students, I pride myself in displaying an approachable and considerate attitude towards my peers and the school.

I have always been driven to demonstrate commitment, enthusiasm and integrity, both academically and in extracurricular activities. By representing Barr Beacon School as a musician at Awards Evening, as a prefect at Open Evening and as a sportsman at tournaments, I have learnt to enhance such spirit throughout all aspects of school, creating comfortable environments which place great emphasis on the achievements and success of the student body.

Having been granted such a prestigious role, I will dedicate myself to enhancing our school environment by promoting diversity and inclusivity whilst also soliciting feedback to better understand the desires of Barr Beacon students. With a genuine ambition for student achievement, I intend on bringing a different yet determined personality to this role.



J.A.Rajput | Deputy Head Student



From the moment I appealed to gain my place in Barr Beacon School in 2018, to making my way on to the Head Student Team in 2024, I have always been proud to say that this school has helped me to gain so much. From achieving a range of outstanding GCSEs, to attaining skills in public speaking, team leadership and critical thinking, I have been encouraged to embrace these opportunities, allowing me to develop my confidence and grow, shaping me into the person that I am today.

Throughout the years, this school has also provided me with many opportunities: work experience days, Duke of Edinburgh expeditions, the Diana Award, subject workshops and career fairs, all contributing to my progression from a boy who was anxious about his future, to a young adult who is now striving towards a career in architecture.

Z. Copeland | Deputy Head Student

I am proud to have been entrusted with the role of Deputy Head Student, a position that will enable me to continue to represent the school I have come to love and that has provided me with ample opportunities all of which have helped to curate the character I am today.

During my time at Barr Beacon School, I have been given the opportunity to travel, immersing myself in new cultures alongside my peers. I was also tasked with the position of Prefect. These experiences have instilled skills in me such as independence, perseverance and collaboration that I now intend to use as I progress through the next few important chapters of my life. I believe that in seizing all the opportunities I have been presented with, I have become someone who will thrive in all future endeavours. It is for this reason that as Deputy Head Student, it is be an objective of mine to ensure that others have the strength to do the same whilst allowing them to communicate any adversities or apprehensions they encounter along the way.



DRESS CODE

Certain expectations still exist in professional workplaces. For instance, it is still more common for men to wear ties to work. This is the only gendered difference you will find in our uniform policy. Women are welcome to wear ties as well if they wish. And, of course, students can dress according to whichever gender they identify as.

MEN & WOMEN

- Two-piece matching suit (tailored trousers and a matching jacket, tailored skirt and a matching jacket) OR a black tailored skirt/black tailored trousers with any colour (plain or patterned) tailored blazer.
- All skirts/dresses must be at least 12cm above the ankle and no more than 5cm above the knee.
- Dresses - a coloured tailored dress with a black blazer or a black tailored dress with a coloured blazer.
- Shirt/blouse with a collar.
- A smart v-neck or round neck jumper can be worn over the shirt/blouse. The shirt/blouse collar must be worn over the jumper. A quarter-zip jumper can be worn as long as the shirt collar and tie are visible. Jumpers can only be worn with a suit jacket/blazer, not instead of.
- Compulsory for men: tie/bow tie.
- Smart shoes.

[See our full uniform policy HERE](#)

NOT PERMITTED

- Lycra skirts
- Tight trousers
- Thick knitted jumpers
- Sweatshirts
- Polo necks
- T-shirts
- Leggings
- Boots



CHOOSING THE RIGHT SUBJECT

When exploring your subject choices for Sixth Form, it is important to keep your plans for the future in mind. If there is a specific career or university course you are interested in applying to, then researching the entry requirements now will help you in making those decisions. For example, if you want to go on to study Medicine then one of the essential requirements, at most universities, is to take A level Chemistry. As entry requirements for each university course vary, it is essential that you complete your own detailed research before making your final decision.

The UCAS website offers a comprehensive [Search Tool](#) that allows you to explore every UK university course, including their most recent entry requirements. With thousands of courses available at hundreds of universities, your search can be filtered by subject interest and location to narrow them down.

For a quick idea of which subjects you may need to study in the Sixth Form, please take a look at the [Informed Choices](#) tool from the Russell Group Universities.

For those who wish to apply to apprenticeships, this is a little more complicated, as opportunities arise as and when companies have them. The application process is very competitive and often involves lots of stages, including assessment centres, psychometric tests and interviews. Students will be supported in school with this but can start exploring their options on the [Rate My Apprenticeship](#) and [UCAS](#) websites.

CHOOSING A COURSE

Every student will be studying 3 courses across the 2 years. All of our courses are offered as 2 year courses.

**PATHWAY 1:
3 A LEVELS**

**A level
History**

**A level
French**

**A level
English Language
and Literature**

**PATHWAY 2:
2 A LEVELS AND
1 BTEC/AAQ**

**A level
Chemistry**

**A level
Mathematics**

**BTEC
Business**

***PATHWAY 3:
1 A LEVEL AND 2 BTECs/
AAQs**

**A level
Sociology**

**AAQ
Health & Social**

**BTEC
Applied Law**

***Please note that Pathway 3 is dependent on a pending announcement from the Government. This option may not be available.**

There are many different combinations. The most difficult (and exciting) decision is choosing which course to take. It is easier if you have a specific destination in mind (a particular degree, apprenticeship or career).

If you don't know what to choose, our advice will always be to go with what you think you will enjoy. But don't let that put you off choosing something you haven't studied before. There are plenty of courses which don't require you to have studied the subject at GCSE. Check the course pages in this prospectus carefully.

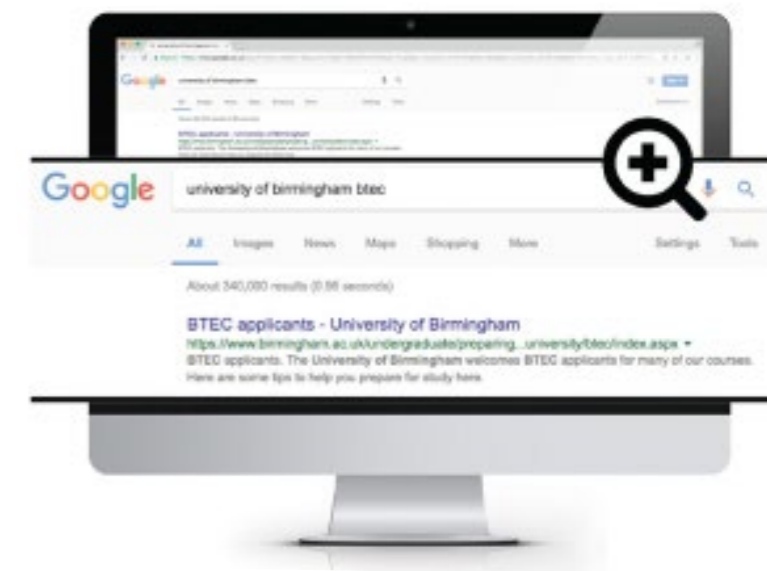
BTEC

Modern BTECs are very different from the old style qualifications. One of the most significant differences is that they all have an externally-assessed examination unit. Because they are more rigorous and intellectually-demanding, the modern BTECs have considerable currency with universities, apprenticeship providers and employers.

Over 95% of universities accept students with BTECs, including those that belong to the prestigious Russell Group, such as the University of Birmingham.

Some universities have even set up special sites to make it clear how much they want students with BTECs. Try Googling the name of a university you might be considering attending + 'BTEC' to see for yourself.

Higher Apprenticeship and Degree Apprenticeship providers are eager to take students with A levels, BTECs or combinations of A levels and BTECs.



See our 'University or Apprenticeship?' section on the next page for more information.

UNIVERSITY OR APPRENTICESHIP?

On finishing Year 13, the majority of our students progress to either university or apprenticeships. Whilst it is never too early to start looking ahead, most people keep their options open at this stage, especially if they don't have a firm idea of what they want to do as a career.

We provide personalised, impartial guidance for every student throughout their entire time at Barr Beacon School. If you want to start taking a look for yourself, we recommend the following website as a starting point - www.matrixcareersguide.co.uk

DEGREE APPRENTICESHIPS

Another option that is very popular is a Degree Apprenticeship. They are similar to Higher Apprenticeships but differ in that they provide an opportunity to gain a full Bachelor's degree (Level 6) or Master's degree (Level 7).

Designed in partnership with employers, part-time study takes place at a university or college, with the rest of your time being with your employer. They can take between three to six years to complete, depending on the course level.

For more information visit: www.ucas.com/degree-apprenticeships

DESTINATIONS 2024

UNIVERSITY

Aston University
Birmingham City University
Birmingham Newman University
Cardiff University
Coventry University
Keele University
Lancaster University
Leeds Beckett University
Liverpool John Moores University
Manchester Metropolitan University
McTimoney College of Chiropractic
Nottingham Trent University
The University of Law
University College Birmingham
University of Bath
University of Birmingham
University of Central Lancashire
University of Derby
University of Leicester
University of Liverpool
University of Northampton
University of Nottingham
University of Sheffield
University of Wolverhampton
University of Worcester
York St John University

DEGREE & HIGHER LEVEL APPRENTICESHIPS IN

Anthony Collins Law
AWE
Balfour Beatty
BDO
Gately Legal
HSBC
MBDA
NatWest
RAF
Royal Marines
Softcat
Vistry
West Midlands Police
Wolverhampton Wanderers FC



16-19

BURSARY FUND

WHAT IS THE 16 TO 19 BURSARY FUND?

The 16-19 Bursary Fund offers financial support to students in order for them to purchase books, equipment, uniform, travel passes and meals. We are committed to distributing bursaries to those students with the greatest need. Read all about the Bursary Fund in our policy [HERE](#)

I THINK I AM ELIGIBLE - WHAT DO I NEED TO DO?

Speak to a member of the Sixth Form Team. They will be able to advise you further and if you are eligible, they will ask you to complete the on-line Bursary Application Form.

If you are eligible for free school meals but have yet to apply, the application can be completed online here:

[FREE SCHOOL MEALS](#)

HOW WILL I RECEIVE THE PAYMENTS?

You have 2 options. You can let the Sixth Form Team know what items you require and they will purchase them on your behalf **or** you can purchase them yourself and then you will be reimbursed. Money will be paid directly into the student's bank account. Please make sure you complete details on the Bursary Application Form carefully.
(Payments can take up to 30 days).

ARE THERE SET TIMES DURING THE SCHOOL YEAR WHEN I HAVE TO PLACE MY ORDER/PURCHASE ITEMS?

No. We operate on an 'as you need' basis. You can order items throughout the school year, as and when you need them.

OUR COURSES



Standard Entry: GCSE grade 5 or above in Mathematics and English (Language or Literature) plus 4 other GCSEs at grade 4 or above (this includes BTECs at Merit or Distinction).

COURSE REQUIREMENTS

BTEC

ALMA

Applied Law	A high grade in GCSE English Language and English Literature is indicative of success in this subject.
Art and Design	To have studied Art, Textiles or Product Design in Year 11 and achieved at least a grade 4 OR at least a Pass in the externally examined component of a relevant BTEC.
Business	You do not need to have studied this subject previously BUT if you did take BTEC Business in Year 11 then you need to have achieved at least a Pass in the externally examined component.
Creative Media	You do not need to have studied this subject previously BUT if you did take BTEC Media in Year 11 then you need to have achieved at least a Pass in the externally examined component.
Health and Social Care (AAQ)	You do not need to have studied this subject previously BUT if you did take BTEC Health & Social in Year 11 then you need to have achieved at least a Pass in the externally examined component.
Information Technology (AAQ)	Experience in Key Stage 4 qualifications in Media, Business, IT or Computer Science would be beneficial.
Performance (Dance)	Previous experience of BTEC or GCSE Dance in school or other dance qualifications outside of school is required. A dance audition may be required to assess your suitability for this course.
Sport and Exercise Science	If you did take BTEC Sport in Year 11 then you need to have achieved at least a Pass in the externally examined component.

Biology	At least 2 grade 6s in GCSE Combined Science OR 2 grade 6s in GCSE triple award with one of these in Biology.
Chemistry	At least 2 grade 6s in GCSE Combined Science OR 2 grade 6s in GCSE triple award with one of these in Chemistry. A minimum of a grade 6 in GCSE Mathematics.
Computer Science	A minimum of grade 6 in GCSE Computer Science. A minimum of grade 6 in GCSE Mathematics.
English Language and Literature	A minimum of grade 6 in either GCSE English Language or Literature and a grade 5 in the other.
French	A minimum of grade 6 in GCSE French.
Further Mathematics	A minimum of grade 8 in GCSE Mathematics with significant exposure to grade 9 questions as these are the foundation for each unit. NOTE: You must be studying A level Mathematics in order to study Further Mathematics.
Geography	A minimum of grade 5 in GCSE Geography.
History	A minimum of grade 6 in GCSE History.
Mathematics	A minimum of grade 7 in GCSE Mathematics.
Philosophy and Ethics	You do not need to have studied this subject at GCSE. A minimum of grade 5 in GCSE Philosophy and Ethics if taken.
Physics	At least 2 grade 6s in GCSE Combined Science OR 2 grade 6s in GCSE triple award with one of these in Physics. A minimum of a grade 6 in GCSE Mathematics.
Psychology	You do not need to have studied this subject at GCSE. A minimum of grade 5 in GCSE Psychology if taken. A minimum of grade 5 in GCSE Biology or 2 grade 5s in Combined Science.
Sociology	You do not need to have studied this subject at GCSE. A minimum of grade 5 in GCSE Sociology if taken.
Statistics	A minimum of grade 6 in GCSE Mathematics.



A LEVEL BIOLOGY

COURSEWORK/EXAM SPLIT:
100% exam plus practical skills endorsement

OVERVIEW

The course consists of six modules at A level, starting with biological molecules, where students explore the biochemistry of living things and understand the fundamental chemical components of life. Then, students develop knowledge and understanding of the different types of cells and how these cells have been studied over time to understand the complexities of their functions. Exchange and transport is where students spend time understanding larger physiological processes. Then, students learn through dissections and explore how circulation and gas exchange processes differ in different classes of organisms.

In year two, students explore the biochemical processes of respiration and photosynthesis, linking these to the idea of energy flows in organisms and through the environment. They develop a deeper understanding of evolution and how this links to genetics and inheritance. The final module allows students to explore the developments in DNA technology and how these developments can help us understand and treat illnesses such as cancer or genetic diseases.

COURSE REQUIREMENTS

You need to have achieved at least **2 grade 6s** in **Combined Science** or **2 grade 6s** in the **triple award**, with one of these in **Biology**.

CAREER PROGRESSION

Careers in medicine, biochemistry, biotechnology and many lab-based areas will require A level Biology. Animal science careers including veterinary science, zoology and marine zoology, along with animal behaviour and animal husbandry, are also areas of study which students with Biology A level move into. Biology is also useful for physiotherapy, nursing and other health based occupations.

ASSESSMENT

Exams

Paper 1: Biological Processes: 100 Marks (37%) from topics on practical skills, foundations in Biology, exchange and transport and communication, homeostasis and energy. This includes a multiple choice section.

Paper 2: Biological Diversity: 100 Marks (37%) from topics on practical skills, foundations in Biology, biodiversity, evolution, disease, genetics and ecosystems.

Paper 3: Unified Biology: 70 Marks (26%) from topics on all topics included in the course.

IS THIS COURSE FOR ME?

Yes, if you are interested in exploring how the human body works, how human physiology compares to other organisms, and how these organisms develop over time and interact within their environment. Good mathematical skills are essential if you intend to study various sciences further at a degree level. A level of Biology is necessary for students intending to study Biology and the different biological sciences at the degree level. It is also essential for biomedical and veterinary sciences.



A LEVEL CHEMISTRY

COURSEWORK/EXAM SPLIT:
100% exam plus practical skills endorsement



OVERVIEW

Chemistry helps us to understand the world in which we live and underpins a wide range of science-based degree courses and careers. The course is designed to be stimulating, enjoyable and challenging. We will inspire you to develop a passion for the subject and understand its practical relevance to the world we live in.

The course is split into three different sections: organic, physical and inorganic, and there are now 12 required practicals that you must complete and can be assessed on. In all of these topics, you will need to learn facts and build a body of knowledge but also understand and apply the ideas. Many topics include calculations and so you should feel comfortable rearranging equations and using numbers.

Importantly, Chemistry is a hands-on science and you will carry out experiments on a regular basis. This is to consolidate your theory work, but also provide you with the opportunity to use new apparatus and build your skills and confidence to complete safe and accurate practical work.

COURSE REQUIREMENTS

You need to have achieved at least **2 grade 6s** in **Combined Science** or **2 grade 6s** in the **triple award**, with one of these in **Chemistry**. A minimum of a **grade 6** in **GCSE Mathematics** is also required.

CAREER PROGRESSION

Chemistry A level is on the Russell Group's list of facilitating subjects, with its broad variety of tested skills, and it is a respected choice for many degrees and careers. Chemistry has been described as the 'central science' and is often combined with either Physics or Biology. However, it is often a compulsory choice for those wishing to pursue medicine, dentistry and veterinary science, as well as Chemistry-based degrees, such as pharmacy, pharmacology and biochemistry.

ASSESSMENT

3 Exams (Each exam is 120 minutes)

Paper 1: Inorganic and Physical including relevant practical skills. 105 marks. Includes short and long answer questions (35%).

Paper 2: Organic and Physical including relevant practical skills. 105 marks. Includes short and long answer questions (35%).

Paper 3: Any content from the specification. 90 marks. Includes structured questions on practical technique, critical analysis of given experimental data and 30 marks of multiple choice questions (30%).

IS THIS COURSE FOR ME?

Yes, if you have good mathematical skills and are considering studying sciences further at degree level. Chemistry is a required subject for admission to most medical schools and is valuable to students intending to study all aspects of Biology and Biomedical Sciences. Chemistry also supports students who intend to study aspects of Engineering and forms a good fit with Physics in this regard. It is a rigorous A level subject and will require a lot of commitment.



A LEVEL COMPUTER SCIENCE

COURSEWORK/EXAM SPLIT:
20% coursework and 80% exam



OVERVIEW

Discover the world of technology and innovation with the A level Computer Science program, designed to equip students with a deep understanding of computer science principles and practical coding skills. This comprehensive two-year course offers a rich curriculum, combining both theory and hands-on experience, and providing a strong foundation for a variety of tech-related careers. Our A level Computer Science curriculum covers a wide array of computer science topics, from programming and data structures to computer architecture and software development. You will stay up to date with the latest technological advancements, ensuring you are well-prepared for the ever-evolving tech landscape.

Theory and Practice: This program balances academic rigor with practical programming. You will learn to design efficient algorithms, develop software applications and master various programming languages, offering both a theoretical and practical understanding of the subject.

Problem-Solving Skills: A strong emphasis is placed on problem-solving. You'll develop critical thinking and analytical skills to tackle real-world challenges, breaking down problems, designing solutions and implementing them effectively.

COURSE REQUIREMENTS

A minimum of a **grade 6 in GCSE Computer Science**.
A **grade 6 in GCSE Mathematics** is also required.

Project-Based Learning: Throughout the course, you will engage in exciting projects that showcase the practical applications of your knowledge. These projects allow you to demonstrate your creativity and innovation, working on software development and addressing real-world issues.

CAREER PROGRESSION

Embark on a journey of discovery and innovation with A level Computer Science. This program is your gateway to a future in technology, whether you aspire to be a Software Engineer, Computer Programmer, Web Developer, Data Scientist, Systems Analyst or a Technology Entrepreneur. Join us in shaping the future of the digital world and equipping yourself with the skills needed to make a meaningful impact in the technology industry.

ASSESSMENT

This course consists of three components, two of which are written exam papers (40% each) and a programming project (weighted at 20%).

IS THIS COURSE FOR ME?

This course is for people who have a keen interest in programming and understanding how computers work, enjoy creating digital products, and have a good understanding of Mathematics and how it can be used to solve problems.



A LEVEL ENGLISH LANGUAGE AND LITERATURE

COURSEWORK/EXAM SPLIT:
20% coursework and 80% exam



OVERVIEW

A fully integrated course which links directly to the skills learned at GCSE, you will draw on the established academic fields of stylistics, linguistics, narratology and creative writing through a contemporary approach to studying a range of literary and non-literary discourses and texts, with emphasis on precise linguistic analysis.

You will explore point of view and genre in prose fiction, voice and identity in poetry and interaction and conflict in drama. You will study the representation of place in an anthology of non-literary texts (including spoken language, media texts and new technologies) and develop your own writing through textual intervention work.

CAREER PROGRESSION

English Language and Literature at A level equips students with knowledge, understanding and a range of skills useful in a variety of analytical and communication-centered subjects and professions. Possible career paths may lead to law, teaching, advertising, speech and language therapy, journalism and other media and communications industries. Essentially any career where you might wish to convince someone, persuade them or even interest and excite them.

COURSE REQUIREMENTS

GCSE grade 6 in either **English Language** or **Literature** and grade 5 in the other.

ASSESSMENT

Paper 1

40% of overall qualification:
Telling Stories: 3 questions, one on each of the anthology (non-literary texts), prose (open book) and poetry (open book).

Paper 2

40% of overall qualification:
3 questions - creative writing, critical commentary (open book) and a drama text (open book).

Non-Exam Assessment (Coursework)

20% of overall qualification:
A personal investigation that explores a specific technique or theme in both literary and non-literary discourse (2500 - 3000 words).

IS THIS COURSE FOR ME?

Yes if you are interested in how language and literature shape us culturally and developmentally and how they are both used to demonstrate, exert and call out power and influence. Also if you are curious as to what makes great writers great.



A LEVEL FRENCH

COURSEWORK/EXAM SPLIT:
100% exam

OVERVIEW

Over the course of the two years, you will study a range of topics as they relate to the French-speaking world. These include:

- social issues and trends.
- political, intellectual and/or artistic culture.
- being a young person in a French speaking society.
- diversity and understanding the French speaking world.
- France between 1940 and 1950. The occupation and post-war years.

You will also study two pieces of literary texts or a piece of literary text and a film.

CAREER PROGRESSION

An A level in French is an asset on any CV, meaning you could do any job in a French speaking country. Careers directly linked to this A level include teaching, translating/interpreting, journalism, working in the travel industry, international law or business and working in the civil service or the security services (MI5/6).

COURSE REQUIREMENTS

A minimum of a grade 6 in GCSE French.

ASSESSMENT

Students will have to sit three exams:

Component 1 is a speaking exam that lasts between 21 and 23 minutes. Students present a research project they carry out independently and then discuss the content with the examiner. They will also have a short discussion based on a stimulus (30% of the final grade).

Component 2 is an exam with a listening, reading and translation task (50% of the final grade).

Component 3 is two essays based on two literary works or one literary work and a film chosen from a prescribed list (20% of the final grade).

IS THIS COURSE FOR ME?

Yes, if you want to develop an interest in, and enthusiasm for, language learning and would be excited about developing an understanding of the language in a variety of contexts and genres. Students will need to communicate confidently, clearly and effectively in the language for a range of purposes and develop their awareness and understanding of the contemporary society, cultural background and heritage of countries or communities where the language is spoken.



A LEVEL

FURTHER MATHEMATICS

COURSEWORK/EXAM SPLIT:

100% exam

edexcel 

OVERVIEW

The course is linear with two-thirds covering Pure content, the remaining third being split between two areas of Applied Mathematics (Statistics, Mechanics and Decision Mathematics).

The course is designed to encourage students to:

- develop abilities to reason logically and recognise incorrect reasoning, to generalise and to construct mathematical proofs.
- extend their range of mathematical skills and techniques and use them in more difficult, unstructured problems.
- recognise how a situation may be represented mathematically and understand the relationship between 'real-world' problems and other mathematical models and how these can be refined and improved.
- use Mathematics as an effective means of communication.
- develop an awareness of the relevance of Mathematics to other fields of study, to the world of work and to society in general.

You will study series, complex numbers, numerical solutions to equations, coordinate systems, matrix algebra, proof, inequalities, first and second order differential equations, hyperbolic functions and further vectors. In addition, you will further your study of Applied Mathematics.

COURSE REQUIREMENTS

A minimum of a **grade 8 in GCSE Mathematics** with significant exposure to grade 9 questions as these are the foundation for each unit.

NOTE: You must be studying A level Mathematics in order to study Further Mathematics.

CAREER PROGRESSION

Further Mathematics equips students with the skills necessary for a wide variety of careers and higher education courses from medicine to the social sciences. It will be particularly valuable to anyone considering studying Mathematics or Engineering at university.

ASSESSMENT

There will be four written exam papers which will cover the content studied. Two areas out of Statistics, Mechanics and Discrete Mathematics will be studied and examined.

IS THIS COURSE FOR ME?

Yes, if you have a true passion for Mathematics, an interest in the further study of Mathematics and recognise the value and importance of two A level Mathematics qualifications.



A LEVEL GEOGRAPHY

COURSEWORK/EXAM SPLIT:
20% coursework and 80% exam



OVERVIEW

A level Geography offers a natural progression from GCSE. Geography is a subject which allows those who study it to bridge the two concepts of human behaviour and the natural world by investigating the causation between them. If you want to be part of a subject which can take you across the world on fieldwork, help curb the effects of human pollution or study the patterns of this planet we call home, then consider choosing Geography.

This engaging and flexible subject gives students the opportunity to:

- engage with the relationship of human populations to each other, over space and time.
- study the relationship between human populations with their physical environment at a variety of scales from the local to the global.
- consider their own role in relation to themes and issues being studied and the roles, values and attitudes of others including decision makers.

Geography Fieldwork involves a mandatory four day residential. In the past this has been to the Dorset Coast at an approximate cost of £250 per student. This is a fantastic opportunity to develop the skills you acquire in the classroom and see Geography in a completely different way.

COURSE REQUIREMENTS

A minimum of a **grade 5** in **GCSE Geography**.

CAREER PROGRESSION

Cartographer, Surveyor, Environmental Consultant, Geographical Information Systems Officers, Planning and Development, Teacher or Town Planner.

ASSESSMENT

Coursework assignment of 3,000-4,000 words.

60 marks (20%). Internally assessed - moderated by the exam board.

Component 1: Physical Geography.
Written exam: 2 hours 30 minutes.
120 marks (40%).

Component 2: Human Geography
Written exam: 2 hours 30 minutes.
120 marks (40%).

IS THIS COURSE FOR ME?

Geography is a dynamic and relevant subject for all young people. Studying Geography gives students the opportunity to explore the world both inside and outside the classroom, learning about both natural and social sciences along the way. If you are inquisitive, enjoy learning about people and their societies, economies, cultures and the environment, and especially like to explore the world in which you live, then Geography could be for you.



A LEVEL HISTORY

COURSEWORK/EXAM SPLIT:
20% coursework and 80% exam



OVERVIEW

History A level is made up of three components, each one helping students to develop a different skill and a passion for different periods of history.

Component 1 is the breadth study focusing on the Tudors and England from 1485-1603. This involves the study of different social, economic and political changes in England from Henry VII to Elizabeth I. It looks at significant events and interpretations of key historical developments in this period.

Component 2 is the in-depth study focusing on Democracy & Nazism from 1918-1945. This looks in depth at the journey of Germany from a democracy under the Weimar Republic to a dictatorship under the Nazis. It is investigated using primary sources and will build on the skills students developed at GCSE.

Finally, component 3 is the non examined assessment which is an Historical Enquiry into Crime and Punishment from 1829-1929.

It is essential that students can express themselves well in written form. They need to be able to read and analyse texts as well as express opinions and be coherent with a line of reasoning. Above all, an enthusiasm for the subject is key to doing well at A level.

COURSE REQUIREMENTS

A minimum of a **grade 6** in **GCSE History**.

CAREER PROGRESSION

There are certain areas for which History has a particular relevance, especially in the fields of journalism and law where research, debate and analysis are key skills. However, people with a qualification in the subject can be found in all walks of life: industry, commerce, teaching and even jobs in the media.

For many, History is an interest that is life-long and skills such as communication, research, interpretation and analysis help in most career choices made by students after completing their A level.

ASSESSMENT

Unit 1 Exam - 40%

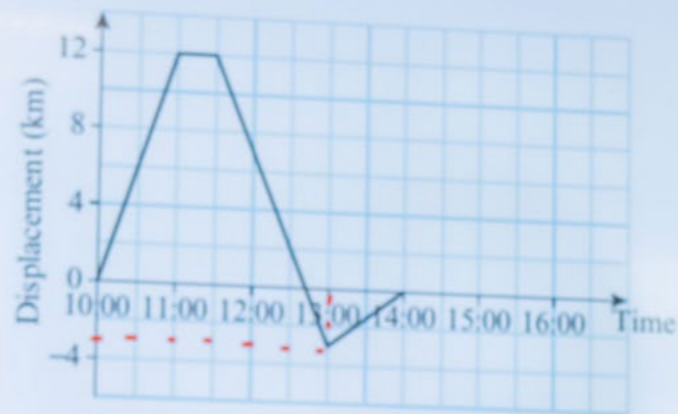
Unit 2 Exam - 40%

Unit 3 Historical Enquiry - 20%

IS THIS COURSE FOR ME?

History helps us to assess and understand the world we live in today by studying developments and the impact that they have had on us. People who can make decisions, who can debate, make judgements and explain their ideas would be suited to History. Communication, reasoning and analytical skills will also help, as will the ability to argue a point and express themselves.

Stats/Mechanics Year 1
32-133



A LEVEL MATHEMATICS

COURSEWORK/EXAM SPLIT:
100% exam



OVERVIEW

This A level is designed to produce mathematicians who are resilient, rigorous, independent, accurate and good problem solvers. The course is linear with two-thirds covering Pure content, the remaining third being split between Mechanics and Statistics, which includes the study of a large data set. The course is designed to encourage students to:

- develop abilities to reason logically and recognise incorrect reasoning, to generalise and to construct mathematical proofs.
- extend their range of mathematical skills and techniques and use them in more difficult, unstructured problems.
- recognise how a situation may be represented mathematically and understand the relationship between 'real-world' problems and other mathematical models and how these can be refined and improved.
- use mathematics as an effective means of communication.
- develop an awareness of the relevance of mathematics to other fields of study, to the world of work and to society in general.

COURSE REQUIREMENTS

A minimum of a grade 7 in GCSE Mathematics is required.

You will study algebra and functions, coordinate geometry in the (x, y) plane, sequences and series, differentiation, integration, trigonometry, exponentials and logarithms, numerical methods, proof and vectors.

In Statistics you will learn about sampling, representation and summary of data, probability, distributions and hypothesis testing.

In Mechanics you will learn about mathematical models in mechanics, vectors, kinematics and dynamics of a particle, moments, forces and Newton's Law.

CAREER PROGRESSION

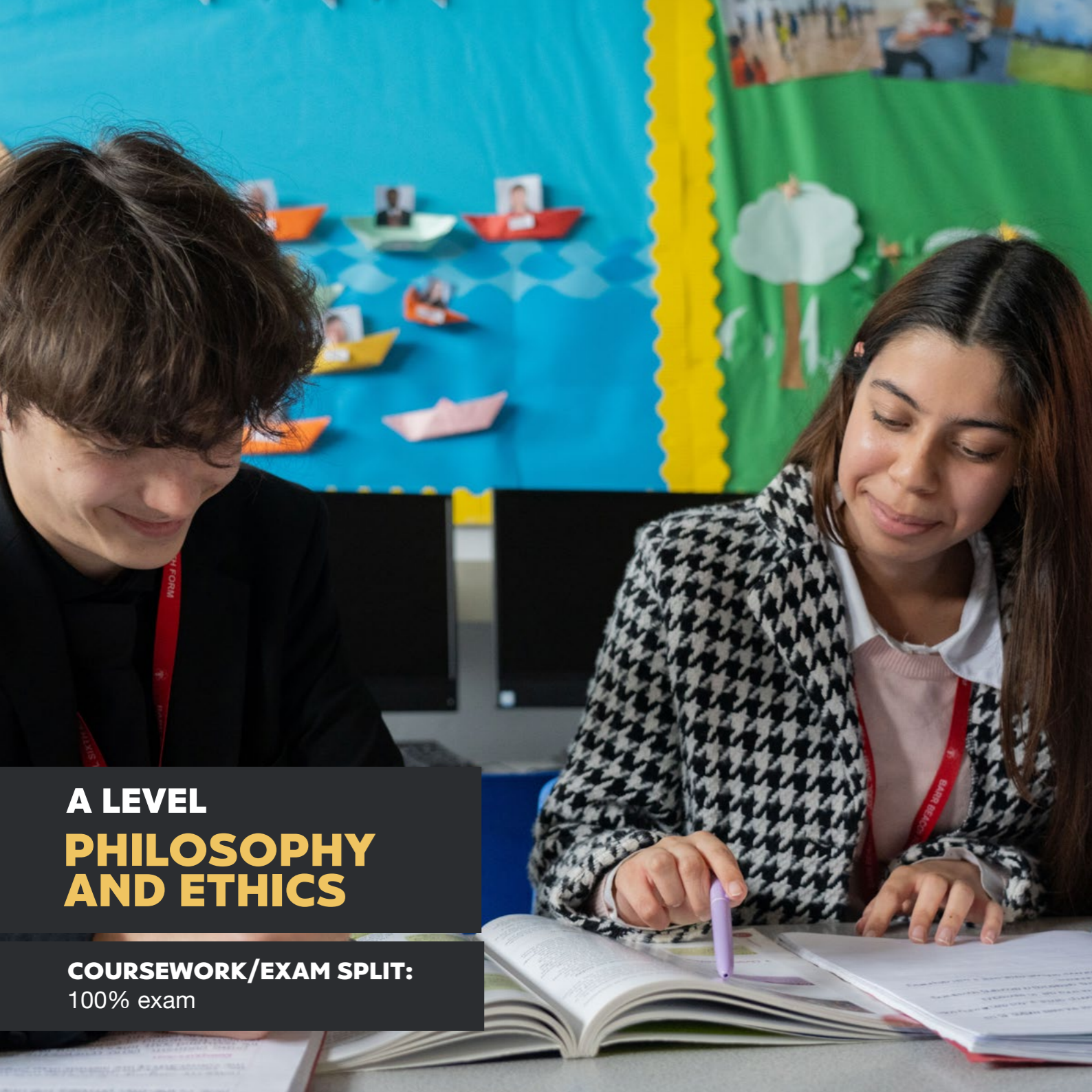
This course equips students with the skills necessary for a wide variety of careers and higher education courses, from medicine to the social sciences. Popular careers are engineering, computer science, business and those with high science content.

ASSESSMENT

There will be three written exam papers which will cover the content studied. There will be sections on Mechanics and Statistics, which will require studying a large data set in advance.

IS THIS COURSE FOR ME?

Yes, if you excelled at and enjoyed GCSE Mathematics and relish the challenge of unfamiliar problems. You must be passionate about Mathematics and be resilient when faced with a challenge.



A LEVEL PHILOSOPHY AND ETHICS

COURSEWORK/EXAM SPLIT:
100% exam



OVERVIEW

Philosophy is the study of the big questions in life; it is a study into different ways of looking at the world around us and questions knowledge, reality and existence. For example, what is the meaning of life? What happens to us after we die? Ethics is a study into how we should behave; we consider theories and attitudes in deciding what is morally right and wrong. Students engage in many ethical dilemmas such as euthanasia, adultery and premarital sex. In Ethics students enjoy getting involved in deep ethical debates and develop their skills of persuasive arguments, useful for many careers such as Law.

Some of the concepts we look at are quite abstract to encourage you to engage in critical discussions before looking at the theories of key ancient and world philosophers. Philosophy and Ethics is rooted in the study of history, society, law, current affairs, religious and cultural beliefs and morality. Therefore, as a humanities subject, it complements a range of other subjects such as History, English, Sociology, Psychology and Law. Philosophy and Ethics is a well-established academic subject, highly thought of by universities and employers from a range of disciplines.

COURSE REQUIREMENTS

If you studied **Philosophy and Ethics** at **GCSE** we ask for a minimum of a **grade 5**. However, you do not have to have studied it previously.

CAREER PROGRESSION

Studying Philosophy and Ethics will give you a wide range of skills that are applicable to most university courses and job roles. This includes problem-solving, critical thinking, persuasive writing, confidently and coherently explaining your views and ideas, analytical thinking, presenting innovative ideas and being open-minded.

Employers look for Philosophy and Ethics students because they are able to apply these skills in a range of situations and contexts. Students who have studied this subject go into a number of different areas of further study and employment. Popular jobs that use skills and subject knowledge from Philosophy and Ethics are: law, teaching, media, journalism, social work, business management, medicine, nursing, accounts, business, hospitality, child care, healthcare professions and many more.

ASSESSMENT

Exams: Philosophy (33.3%), Ethics (33.3%)
Christian Developments (33.3%)

IS THIS COURSE FOR ME?

This course is perfect for those who like to have their views and beliefs challenged. Socrates said, "The unexamined life is not worth living". Philosophy and Ethics is a subject for those students who enjoy thinking about key problems in life and can think critically about their own views and the views of others. This subject allows you to discuss key ideas and answer interesting questions such as 'How do we know we exist?', 'Why are we here?', 'Is it ethically correct to...?' It is an academically rigorous subject but one which helps people to develop skills that are transferrable to a wide variety of future occupations.



A LEVEL PHYSICS

COURSEWORK/EXAM SPLIT:
100% exam plus practical skills endorsement



OVERVIEW

The OCR A level Physics curriculum is divided into six teaching modules.

In module one, students learn how practical skills can be used in physics to plan, carry out and evaluate experiments.

In module two, students learn about physical quantities, their nature, measurements and uncertainties.

In module three looks deeper into the concept of forces and motion. Students will examine kinematics, dynamics and other theories, including Newton's laws of motion.

In module four, students will study electrons, waves and photons. During this topic, students will look at the concepts of resistance and superposition in more detail, among other ideas.

In module five, students look at the Newtonian world and how these laws apply to astrophysics.

In module six, students will explore the physics behind particles and how these can be manipulated in a medical setting.

COURSE REQUIREMENTS

You need to have achieved **at least 2 grade 6s** in **Combined Science**, or **2 grade 6s** in the **triple award**, with one of these in **Physics**. A minimum of a **grade 6** in **GCSE Mathematics** is also required.

CAREER PROGRESSION

In addition to being essential to the study of all branches of Physics, A level Physics is important for successful entry to and completion of all branches of engineering. The subject is also useful for mathematical modelling of the real world and has applications in the computer game industry and in risk analysis in finance.

ASSESSMENT

Paper 1 - Modelling Physics: 100 Marks (37%) from topics including practical skills, foundations in Physics, forces, motion and astrophysics.

Paper 2 - Exploring Physics: 100 Marks (37%) from topics including practical skills, foundations in Physics, Electrons, Waves, Photons, particles and medical physics.

Paper 3 - Unified Physics: 70 Marks (26%) from all topics included in the course.

IS THIS COURSE FOR ME?

Yes, if you are someone who is interested in exploring how the laws of Physics are observed and applied in everyday life, how developments in our knowledge of the universe allow us to develop theories of how the universe evolves over time and how forces we can't see affect everything we perceive.



A LEVEL PSYCHOLOGY

COURSEWORK/EXAM SPLIT:
100% exam



OVERVIEW

Psychology is the 'study of the mind'. The course is designed to help you understand human thinking and behaviour.

Paper 1 consists of introductory topics in Psychology, including Social Influence, Memory, Attachment and Psychopathology.

Paper 2 is designed to look at Psychology in context. Areas covered include Approaches in Psychology, Biopsychology and Research Methods. Although Research Methods is a stand-alone topic, questions can be imbedded in any of the topics mentioned above. It also covers mathematical skills which make up 10% of the course.

Paper 3 is studied during the second year of the course and covers Issues and Options in Psychology. Content includes topics such as Issues and Debates, Gender, Schizophrenia and Forensic Psychology.

COURSE REQUIREMENTS

A minimum of a grade 5 in GCSE Psychology (if taken).
Grade 5 in Biology or 2 grade 5s in Combined Science.

CAREER PROGRESSION

Psychology opens the door to many job opportunities, not solely working as a psychologist. Most Psychology graduates go on to graduate schemes in large companies, as this subject helps you understand how to work with others. Common types of employment for Psychology graduates are: management in any company, sports coaching, training and human resources, police, probation, prison service, nursing or care worker, hospitals, clinical psychologist, social worker, teachers, lecturers and researchers.

ASSESSMENT

There are three papers each worth 33.3% of the A level qualification. Each section has 24 marks worth of questions except for Research Methods which is 48 marks. The papers are 2 hours long and include a range of multiple choice, short answer and extended writing questions. The extended writing questions are essays worth 16 marks each.

IS THIS COURSE FOR ME?

Yes, if you want to learn more about the scientific study of the human mind and brain and how it affects our beliefs and behaviours

You will be required to write essays, analyse statistics and understand many biological concepts.

USEFUL LINK

Career options in Psychology - The British Psychological Society ([bps.org.uk](https://www.bps.org.uk)).



A LEVEL SOCIOLOGY

COURSEWORK/EXAM SPLIT:
100% exam



OVERVIEW

Have you ever wondered ‘Why are we fixated with celebrities?’, ‘What makes someone a criminal?’, ‘Does social class matter anymore?’ or ‘What makes people behave like that?’. Sociology looks at how we experience life and how sociological research can help inform new sociological policies that can be implemented in society today. It is the scientific study of human social behaviour and its origins, development and structure. We look at how human beings flourish in a society and how society is organised. At A level you will study a wide range of topics including education, the family, research methods, crime and deviance and beliefs in society.

CAREER PROGRESSION

People who study Sociology go into a wide variety of jobs. You will gain a range of very valuable skills that will give you a variety of future career options. You will learn how to work independently. You will learn how to find information, extract what is important from it and turn it into an argument. You will learn to think critically and analyse arguments. It will give you the ability to think clearly and deliver a viewpoint coherently. Employers agree Sociology students have skills that make them very valuable in the workplace.

COURSE REQUIREMENTS

A minimum of a Grade 5 in Sociology (if previously studied).

Jobs and fields that use sociological skills and subject knowledge include: professional sociologist, social work, business person, lawyer, medicine, teaching, criminal justice, journalism, human resources, environmental studies, public relations, politics and many others.

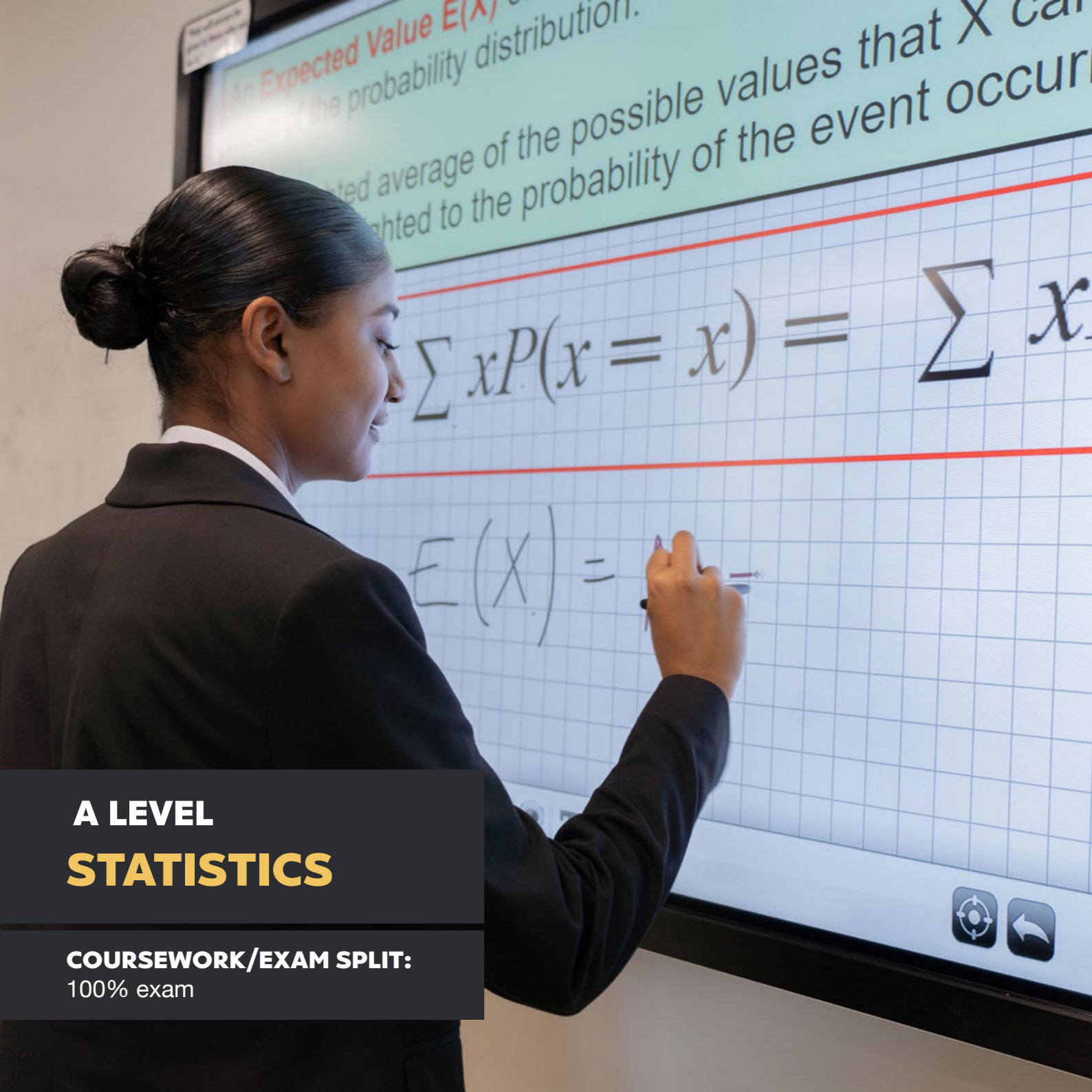
ASSESSMENT

Paper 1 Education and Research Methods (33.3%)
Paper 2 Family and Beliefs (33.3%)
Paper 3 Crime and Deviance and Research Methods (33.3%)

IS THIS COURSE FOR ME?

This course is suitable for people who are intrigued by the behaviour of others. It allows you to study key theories and ideas on why society functions the way it does and challenge these ideas with your own. Sociology is an academic subject which is constantly being updated as new theories and ideas are accepted. This subject would suit students who are excited by thinking through their own ideas and debating key ideas in society with others.

It is suitable for students who are open minded and willing to accept the views of others and think critically about them. Sociology is suitable for students who are committed to doing well and want to gain skills in a subject that is relevant for a wide area of future career choices.



A LEVEL STATISTICS

COURSEWORK/EXAM SPLIT:
100% exam



OVERVIEW

A level Statistics offers students who have a good understanding of Mathematics at GCSE level the chance to study the statistical element, focusing on how statistics are applied to make sense of the world around us. The specification focuses on using and applying statistics to a wide variety of real life situations.

The course is designed to encourage students to:

- understand the application of techniques within the framework of the statistical enquiry cycle and the research methodologies used in experiments and surveys.
- apply statistical techniques to data sourced from a variety of contexts, appreciating when samples or population data could be used and applying appropriate sampling techniques.
- generate and interpret the diagrams, graphs and measurement techniques used in performing statistical investigations.

CAREER PROGRESSION

Statistics can be useful for students who need the skills and techniques for the study of and careers related to: Biology, Medical Science, Sports Science, Economics, Geography, Psychology and Business Studies. Many subjects at degree level require the ability to work confidently with data. A level Statistics will be very useful in both assisting you in these courses, as well as demonstrating your ability to process and analyse data.

ASSESSMENT

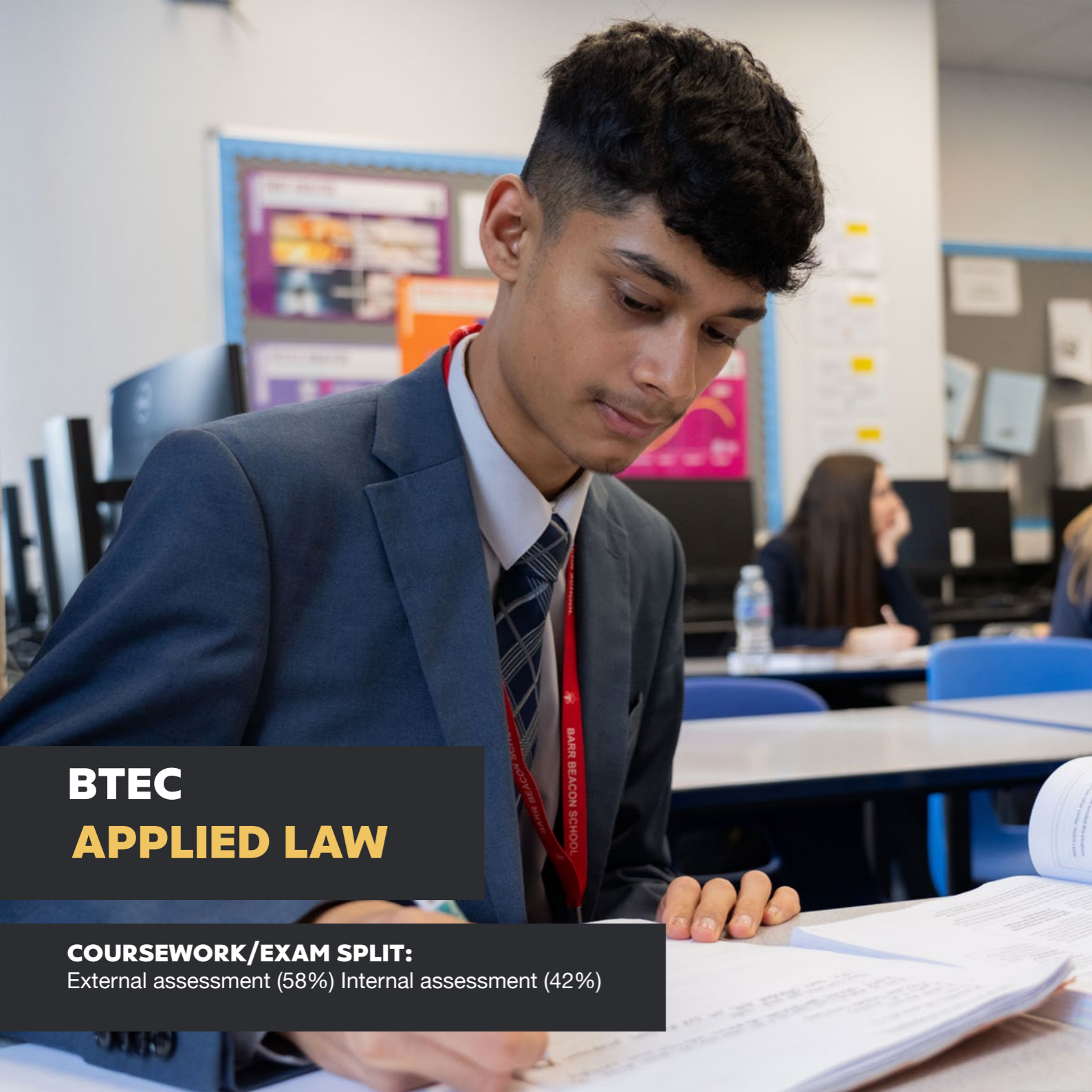
There will be three written exam papers which will cover the content studied.

IS THIS COURSE FOR ME?

Yes, if you excelled at and enjoyed GCSE Statistics or GCSE Mathematics, especially the statistical elements and relish the challenge of unfamiliar problems. You must be passionate about Mathematics and be resilient when faced with a challenge.

COURSE REQUIREMENTS

A minimum of a grade 6 in GCSE Mathematics.



BTEC APPLIED LAW

COURSEWORK/EXAM SPLIT:
External assessment (58%) Internal assessment (42%)



Pearson

OVERVIEW

BTEC Applied Law is a course, equivalent in size to one A level, which would suit those interested in pursuing a career in a professional setting where they are dealing with the public.

It allows students to examine a range of interesting issues such as criminal law and the legal system, along with looking at the laws that affect the family and everyday life. It includes the opportunity to develop the research, communication and critical-thinking skills valued by higher education and by employers.

The course will offer work-related learning, giving learners an edge and opening the door to higher education or employment in legal or business sectors. Learners can progress to higher education and develop transferable skills such as case study research, teamwork and communication.

It will provide students with a broad knowledge of issues in society, history and in law. It would be of interest to students who have an interest in and enthusiasm for the law and may wish to follow Law into higher education.

COURSE REQUIREMENTS

A high grade in GCSE English Language and English Literature is indicative of success in this subject.

CAREER PROGRESSION

Careers could include working within the criminal justice system, the police, journalism, probation work, criminologist or social work.

Employers say that this qualification will provide learners with the relevant knowledge at this level, whilst giving opportunities to develop the skills and behaviours that employers are looking for.

ASSESSMENT

4 units in total (units 1-3 are mandatory)

Unit 1 - Dispute Solving in Civil Law (external assessment)

Unit 2 - Investigating Aspects of Criminal Law and the Legal System (internal assessment)

Unit 3 - Applying the Law (external assessment)

Unit 4 - Aspects of Family Law (optional unit internally assessed)

IS THIS COURSE FOR ME?

This qualification is designed for learners who want to continue their education through applied learning, progress to higher education and ultimately to employment, possibly in the legal sector. It aims to give an introduction to the legal sector. It provides the basis of an excellent route for learners to pursue a career in the legal sector. Studying Law offers the opportunity to develop a range of skills and explore many aspects of human life. Studying Law is fun, it is useful, it provides you with skills and could give you the power to make a difference.



BTEC ART AND DESIGN

COURSEWORK/EXAM SPLIT:
External assessment (58%) Internal assessment (42%)



Pearson

OVERVIEW

Are you interested in starting a career within the creative industry? Are you keen to develop your practical skills in the exciting field of Art and Design, ready for a higher level apprenticeship or education? Do you dream of being an artist, architect, graphic designer, automotive designer, fashion designer, etc? Are you always looking at the next trends and new techniques?

Through a combination of practical units and stimulating assignments you will acquire a range of practical and creative skills through the introduction of a number of ambitious and exciting projects to prepare you for Britain's expanding design industry. You will be given the freedom to experiment and develop your own areas within Art and Design.

You will learn how to analyse the work of others and talk about this in a sophisticated way which will link to Unit 2. You will explore materials, techniques and processes and be pushed for a high level of skill by passionate teachers of Art and Design. You will also be encouraged to find your own methods of expression throughout the innovative units, culminating in a large scale exhibition to show off your work.

COURSE REQUIREMENTS

To have studied Art, Textiles or Product Design in Year 11 and achieved at least a **GCSE grade 4** or at least a **Pass** in the externally examined component of a relevant BTEC.

CAREER PROGRESSION

BTEC Art and Design is widely recognised by industry as a course that supports learners to progress to employment or higher education.

Possible career choices include: Artist, Photographer, Interior Designer, Fashion Designer, Textile Designer, Costume Designer, Architect, Graphic Designer, Stylist, Tattoo Artist and more.

ASSESSMENT

- Unit 1 - Visual Recording and Communication (externally assessed)
- Unit 2 - Critical and Contextual Studies in Art and Design (externally assessed)
- Unit 3 - The Creative Process
- Unit 12 - Fine Art Materials, Techniques and Processes

IS THIS COURSE FOR ME?

This course is for anyone who has a passion for Art, Design, Fashion and Photography and wants to be prepared for careers in the creative industry, people who are imaginative, artistic and keen to improve their practical skills and those who are engaged in the design world.



BTEC **BUSINESS**

COURSEWORK/EXAM SPLIT:

External assessment (58%) Internal assessment (42%)



Pearson

OVERVIEW

There is a very real chance that in the future you will be working for a business or even be running your own. Whether you are a budding entrepreneur or want to complement another course, Business makes sense. Due to the variation in content taught, it links well with many other subjects such as Media, Statistics, Mathematics and many more. The course allows learners to develop their knowledge and skills that will be used in the world of work. With practical elements as well as assignments, tasks and an exam, this gives learners the flexibility to demonstrate their skills across a variety of key assessments.

CAREER PROGRESSION

Careers options include business management (as an employee or entrepreneur), banking and finance (including accountancy, sales and marketing), human resources and customer service. Specialist areas such as marketing, finance and human resources can also be studied at university, or the subject can be combined with a variety of subjects for a joint honours degree.

COURSE REQUIREMENTS

You do not need to have studied this subject previously to take this course. If you did take BTEC Business in Year 11 then you need to have achieved at least a Pass in the externally examined component.

ASSESSMENT

Compulsory Units:

Unit 1 – Exploring Business

Internal Unit

Unit 2 – Developing a Marketing Campaign

External Unit

Unit 3 – Personal and Business finance

External Unit

Plus one optional internal unit chosen to match the strengths and needs of our students.

IS THIS COURSE FOR ME?

Yes, if you are considering employment in the business sector and you want to develop personal skills and attributes for a successful working life. This is the ideal course if you intend to progress to degree courses at university in Business, Accounting, Economics or Management, as well as more specialised degrees in Marketing, for example. There are many degree courses which combine Business or Management with other subjects. Business is very useful for accessing apprenticeships too.



BTEC

CREATIVE MEDIA PRODUCTION

COURSEWORK/EXAM SPLIT:

External assessment (58%) Internal assessment (42%)



Pearson

OVERVIEW

Would you love a career in media, broadcasting, journalism or video production?

This is a practical course which will give you technical skills in media production. You will gain knowledge and skills in areas such as single camera techniques, film production, sound recording and editing. Media is an enjoyable and 'hands on' course in which you will engage with practical equipment and specialised software in order to produce creative work.

CAREER PROGRESSION

This will prepare you for a career in many different media industries. Some examples include: Film or TV Production, Marketing and Promotion, Journalism, Animation and Photography.

Film Production (Fiction) – learn how films are produced and then plan and produce your own short film.

Media Representations – understand how media producers create representations of people and places and how this manipulates an audience's perspectives.

COURSE REQUIREMENTS

You do not need to have studied this subject previously. If you did take BTEC Media in Year 11 you need to have achieved at least a Pass in the externally examined component.

Responding to a commission – practise your skills in industry, completing a professional media brief to meet a client's needs.

Pre-production Portfolio – develop knowledge of industry standard film planning and create your own film planning documents.

ASSESSMENT

Unit 1 - Media Representations - Externally assessed (25%)

Unit 4 – Pre-production Portfolio (25%)

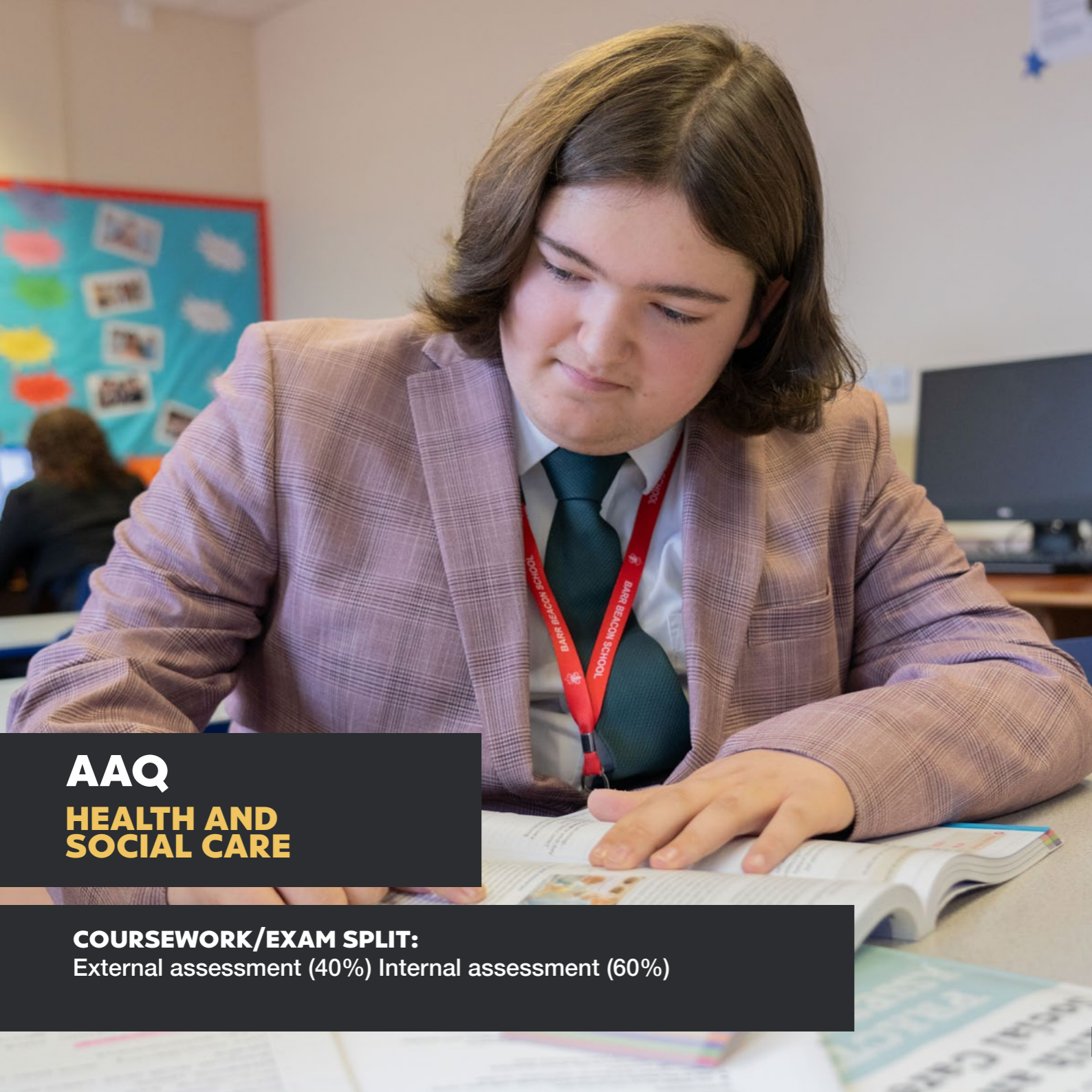
Unit 8 – Responding to a Commission - Externally assessed (34%)

Unit 10 – Film Production (Fiction) (16%)

IS THIS COURSE FOR ME?

Yes, if you:

- want to join an interactive course in which work is completed in an industry context
- want to build and develop links to industry professionals and develop a growing portfolio
- watch films and TV programmes and want to learn about how they are made
- enjoy practical work and the chance to be creative
- want the chance to be completely creative and would like to try something that doesn't involve too many extensive writing tasks.



AAQ HEALTH AND SOCIAL CARE

COURSEWORK/EXAM SPLIT:
External assessment (40%) Internal assessment (60%)



OVERVIEW

This new AAQ course is designed for students who have an interest in Health and Social Care, and in entering into a caring profession such as nursing, midwifery, social work or the probation service. The course content looks at many aspects of Health and Social Care, including human lifespan development, which explores the different stages of life. The course also looks at working in Health and Social Care where students will explore the roles and responsibilities of a variety of workers and organisations.

In Health and Social Care students will be encouraged to:

- develop key knowledge, understanding and skills, relevant to the subject
- think creatively, innovatively, analytically, logically and critically
- develop valuable communication skills that are important in all aspects of further study and life
- develop transferable learning and skills, such as evaluation, planning, presentation and research that can be applied to real-life contexts and work situations
- develop independence and confidence in applying the knowledge and skills that are vital for progression to Higher Education and relevant to the Health and Social Care sector and more widely.

COURSE REQUIREMENTS

You do not need to have studied this subject previously. If you did take BTEC Health and Social Care in Year 11 you need to have achieved at least a Pass in the externally examined component.

CAREER PROGRESSION

A wide range of careers within the community, hospitals, clinics, dental clinics, pharmacies, schools and universities.

ASSESSMENT

Students must complete six units:

Unit F090 - Principles of Health and Social Care

External Unit

Unit F091 - Anatomy and Physiology for Health and Social Care

External Unit

Unit F092 - Person-centred Approach to Care

Internal Unit

Unit F093 - Supporting People with Mental Health Condition

Internal Unit

Unit F095 - Investing Public Health

Internal Unit

Unit F097 - Supporting Healthy Nutrition and Lifestyles

Internal Unit

IS THIS COURSE FOR ME?

Yes, if you have:

- Excellent communication and listening skills
- Excellent problem solving skills
- The ability to use own judgement to make decisions
- The ability to self-motivate and work independently



AAQ Information Technology

COURSEWORK/EXAM SPLIT:
External assessment (67%) Internal assessment (33%)



Pearson

OVERVIEW

This new AAQ course is your gateway to a dynamic career in Information Technology. With industry-relevant content developed in collaboration with experts, you will acquire the latest skills and knowledge for immediate application in the IT sector. Our program prepares you for success, whether you are entering the workforce or pursuing further education. Upon completion, you will hold a recognised Level 3 qualification, positioning you for a fulfilling IT career, be it as a software developer, network administrator, working in Cyber Security or as an IT consultant. Join us and embrace the opportunities of the ever-evolving world of Information Technology.

CAREER PROGRESSION

Some of the courses this qualification supports entry to are:

- Business
- Computer Science
- Software Development for Animation
- Accounting and Finance

ASSESSMENT

The qualification has four mandatory units covering the following topics:

Unit 1 - Information Technology Systems

Unit 2 - Cyber Security and Incident Management

Unit 3 - Website Development

Unit 4 - Relational Database Development

It is designed for learners who are interested in an introduction to the study of creating IT systems to manage and share information alongside other fields of study, with a view to progressing to a wide range of higher education courses, not necessarily in IT.

IS THIS COURSE FOR ME?

Careers options include Cyber Security, Business Management (as an employee or entrepreneur), banking and finance, including accountancy, sales and marketing, human resources and customer service. Specialist areas such as marketing, finance and human resources can also be studied at university, or the subject can be combined with a variety of subjects for joint honours degrees service.

COURSE REQUIREMENTS

Experience with KS4 qualifications in Media, Business, IT or Computer Science would be beneficial.



BTEC

**PERFORMANCE
(DANCE & DRAMA)**

COURSEWORK/EXAM SPLIT:

External assessment (33%) Internal assessment (67%)



Pearson

OVERVIEW

This qualification offers an engaging programme to support learners who want to pursue a career in Dance, Drama, Performing Arts or Health and Fitness. It can prepare learners for a range of apprenticeships in performance-related areas and it also supports access to a range of higher education courses in the Performing Arts sector.

You will undertake mandatory units designed to develop performance skills and your understanding of techniques that are utilised in live performances. A key component mandatory unit is the design and execution of a live group performance.

In addition to this, you will undertake units in improvisation, movement in performance and specialised units for dancers and actors, such as specific dance style explorations and physical theatre. This course is designed for both Dance and Drama students and can be moulded to support the pathways you choose as a performer.

COURSE REQUIREMENTS

Previous experience of BTEC or GCSE Dance/Drama in school or other dance/drama qualifications outside of school are required. An audition may be required to assess your suitability for this course.

CAREER PROGRESSION

The Performing Arts sector, theatre, teaching and health and fitness industry. Employers confirm that this qualification will provide learners with the relevant knowledge at this level, whilst giving opportunities to develop the skills and behaviours that employers in the industry are looking for, and to enable progression into employment directly, or via higher education.

ASSESSMENT

- Five units, of which two are mandatory and one is external.
- Mandatory units are Group Performance Workshop and Developing Skills and Techniques for Performance.
- The external units are a group performance workshop

IS THIS COURSE FOR ME?

This qualification is designed for post-16 learners who want to continue their education through applied learning, progress to higher education and ultimately to employment, possibly in the Performing Arts sector. It aims to give a coherent introduction to the Performing Arts sector.



BTEC **SPORT AND EXERCISE SCIENCE**

COURSEWORK/EXAM SPLIT:

External assessment (58%) Internal assessment (42%)



Pearson

OVERVIEW

When playing sport or taking part in some form of exercise have you ever wondered *What makes my body systems work together to make me perform effectively in different conditions? How does my body generate movement during sport and exercise to enable me to make the correct decisions? or How does managing my thoughts during sport and exercise impact on the way that I perform?*

Sport and Exercise Science plays an important role in today's society, benefitting those who take part at recreational and elite level sport and fitness. Taking part in the course will help learners develop the knowledge, understanding and skills that underpin the Sport and Exercise Science sector in a variety of contrasting areas.

BTEC Sport and Exercise Science is more relatable to sports studies at higher education than the BTEC Sport qualification as you will study topics featured on degree courses including Functional Anatomy, Sport and Exercise Psychology, Coaching for Performance, and Fitness and Biomechanics.

COURSE REQUIREMENTS

A **Pass** in **BTEC Sport** (if taken). Students must have achieved a **Pass** in the externally assessed component (Unit 1).

CAREER PROGRESSION

This is excellent preparation for students wishing to continue studying to diploma or degree level in Sport and Exercise Science. Please note that many universities offering Sport Science or Physiotherapy degrees will also require A level Biology.

It provides students with a variety of key skills which can be transferrable to the world of work including critical thinking, creative solutions, communication, self-management, resilience and many more. It will adequately prepare students for careers in the sports science industry.

ASSESSMENT

Learners are assessed in a modular fashion completing one unit at a time. Learners are assessed through a combination of coursework activities and exams. Learners will sit only one exam in each year.

Unit 2 - Functional anatomy (25% of overall course) - Exam sat in Year 12

Unit 7 – Biomechanics (17% of overall course) - Coursework completed in Year 12

Unit 3 – Sport and Exercise Psychology (33% of overall course) - Exam sat in Year 13

Unit 6 – Coaching (25% of overall course) - Coursework completed in Year 13

IS THIS COURSE FOR ME?

Yes, if you:

- have a keen interest in a variety of sports and/or exercise.
- would like to pursue a career in the sports industry in a variety of roles including education, physiotherapy, biomechanics, sport psychology and coaching (including gym based activities) and/or fitness.

APPLICATION

BARR BEACON STUDENTS

PROCESS

Friday 29th November 2024 Applications open

Friday 10th January 2025 Deadline for applications

February 2025 Interviews begin for successful applicants

April 2025 Conditional offers made subject to GCSE results

9th - 11th July 2025 Sixth Form Induction Days

Thursday 21st August 2025 GCSE Results Day

WHAT IF I AM JOINING BARR BEACON FROM ANOTHER SCHOOL?

Friday 29th November 2024 Applications open

Friday 10th January 2025 Deadline for applications

February 2025 Letter sent home detailing next steps

February - March 2025 Your school will be contacted for a reference and we will keep your application on file

**Thursday 21st August 2025
12:00pm-2:00pm** GCSE Results Day
If you wish to be considered for a place and you have met the entry requirements, please bring proof of your results into school, along with your original passport or birth certificate (photocopies will not be accepted)