

Moving up to Barr Beacon School

www.barrbeaconschool.co.uk



CONTENTS

| | |
|--|----|
| Headteacher's Message | 1 |
| Who will look after me? | 2 |
| House System | 3 |
| Beacon Values | 4 |
| The School Day | 5 |
| How will I know where to go? | 7 |
| Reception | 9 |
| What will I learn in Year 7? | 10 |
| What happens at Break? | 11 |
| What happens at Lunch? | 12 |
| What if I get lost? | 13 |
| Planners | 15 |
| Uniform Expectations | 16 |
| What else can I expect at Barr Beacon? | 18 |

Barr Beacon School is a proud member of Matrix Academy Trust. Together we have a shared belief that no child should fail.

We work in partnership with the trust to provide support to a family of Matrix Academy Trust schools. Together we are committed to improving life chances of all pupils.

Further information about the Trust can be found on their website here
www.matrixacademytrust.co.uk

WELCOME TO BARR BEACON SCHOOL

I am sure you are excited to join my school. I know some of you may also be a bit nervous because it is new and unfamiliar.

There really is no need to worry. We like to keep things as simple as possible. That goes for everything, including uniform, the school day and how we treat other people with respect. I know that within a few weeks of you joining Barr Beacon you will become an expert. But there is nothing stopping you have a read through this booklet, which has been designed to give you a head start. I look forward to seeing you soon.

Ms L Draycott
Headteacher



Ms L Draycott
Headteacher

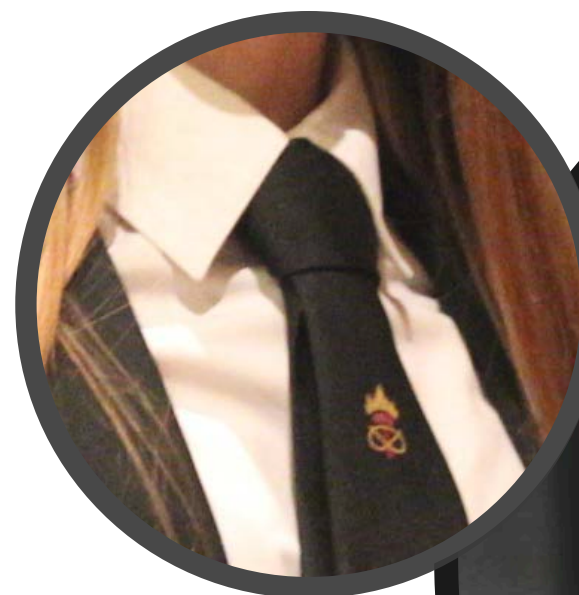
WHO WILL LOOK AFTER ME?

Should you have any worries or issues, you should report them to your Form Tutor, class teachers or Head of House who will help you with any problems you may have. All staff in school are there to look after you and guide you through your transition to secondary school as we know this can be a daunting time.

Barr Beacon School has a group of Prefects in Year 11. These are senior pupils who will be able to help you out if you have a problem. You can recognise them all because they wear a black tie without the usual House-coloured stripes. Instead of the stripes, it has the school badge on it.

You will have two Prefects attached to your tutor group and they will act as your guides during Induction Day and on your first day at Barr Beacon in September.

During the Autumn term your form Prefects will help you to settle in and remind you of where you need to go for your lessons. If you see any Prefects around school, they will be able to offer you support, should you ever need help with anything.



HOUSE SYSTEM



CLENT



BREDON



MALVERN



WREKIN

When you start at Barr Beacon School you will be placed into a 'House'. This will be like your family at school and your Head of House will monitor all of your successes and any areas you might struggle with.

They will contact home to discuss ways in which we can work together to ensure that you achieve your best.

If you have any worries on a day to day basis, you'll be able to talk to your Form Tutor who will work with your Head of House to help you resolve them.

BEACON VALUES

At Barr Beacon School we are proud that our pupils embrace the **BEACON** values in everything they do. Our Beacon Values Representatives help to promote our core values, each value is linked to the British values.

Here is a summary of our core values. Each value written by our team of Beacon Values Representatives.

Be Yourself

We celebrate our many differences and teach all pupils to have the courage to 'be yourself'.

Equal to Everyone

We celebrate all of our differences, whether they be racial, religious, political or sexual orientation. All Barr Beacon pupils are valued.

Act Responsibly

We are a Telling School and have the expectation that we should all do the right things to nurture a positive environment in which everybody can thrive.

Consideration | for Others & the Environment

Our School Council, Eco-warriors and Anti-bullying Champions work together to ensure everybody is caring for one another and our environment.

Own What You Do

Barr Beacon pupils take responsibility for what they do, what they say and how they act. Together we show commitment and work hard.

Never Discriminate

Barr Beacon is a diverse school where everyone stands together as one to challenge all forms of discrimination. As a Telling School we always speak out to challenge discrimination.

THE SCHOOL DAY

8:30am

Entry for Pupils

8:50am

Morning Registration and/or Assembly

9:10am

Lesson 1

10:00am

Break

10:15am

Lesson 2

11:30am

Lesson 3

12:30pm

Lesson 4

1:00pm

Lunch

1:30pm

Lesson 4

2:00pm

Lesson 5

3:00pm

End of Day or Catch Up / Redo / Extra Curricular

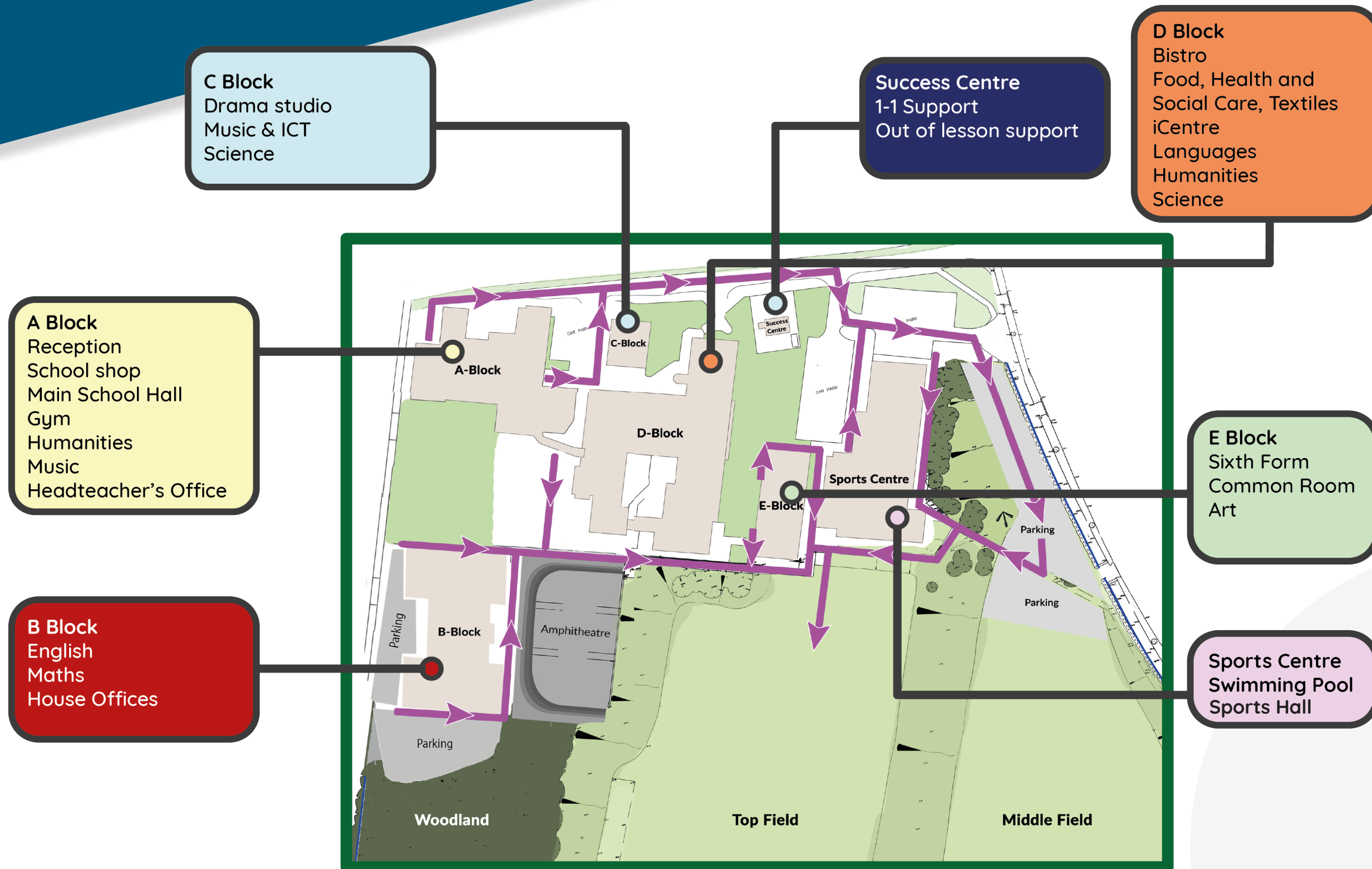
You will have 5 lessons per day. You will have books for most subjects. You do not need to bring all of your books every day. You should use your timetable to plan which books you need for each day.

Many pupils use lunch time to work together on homework, to chat or even to play card games or read a book.

Barr Beacon offers a range of extra-curricular clubs. None of these will start in the first week of term, but from the second week you can join many clubs from debating to street dancing, or you can just choose to work in the iCentre after school with your friends.



HOW WILL I KNOW WHERE TO GO?



RECEPTION

Our Receptionists are the first point of contact for anybody who visits Barr Beacon School.

They will answer the phone when your parents/carers call in and pass on any messages. They will also collect any letters or reply slips for trips.



WHAT WILL I LEARN IN YEAR 7?

You will study a varied and exciting curriculum.

All pupils will study:

- Art
- Computing
- Dance
- Drama
- English
- Food
- Geography
- History
- Mathematics
- Media
- Modern Foreign Languages (German or French)
- Music
- Personal Social Health Education
- Physical Education
- Religious Education
- Science
- Textiles

In addition to this, some pupils will have extra literacy, numeracy and spelling support.



WHAT HAPPENS AT BREAK?

At school you will have a 15 minute break in the morning.

You can socialise with friends in the amphitheatre.



If you want to buy food, you can purchase and eat refreshments in the school hall.



You can read in the iCentre or play table tennis with friends.



*venues for break are currently limited by covid restrictions

WHAT HAPPENS AT LUNCH?

All of Year 7 have lunch at the same time so you will be able to see your friends.

You can buy a meal deal which includes a drink for £2.00. You will need money on your Wisepay account to buy refreshments.

You can bring a packed lunch or buy a sandwich or sub roll at lunch time. Members of Leadership will be on duty during break and lunch time.

You can view the school's menu at www.barrbeaconschool.co.uk/bistro-lunchtime-menu/



WHAT IF I GET LOST?

Many new pupils worry that they will get lost at secondary school. However, it is very easy to find your way around Barr Beacon, as each block is recognisable by a letter.

The different blocks are; A block, B block, C block, D block, E block, Success Centre and the Sports Centre.

Every room has a room number on and your Form Tutor will take you on a tour of the school before your timetable begins when you start school. You can ask any member of staff or pupil and they will show you where you need to go.



CAN I GO TO THE TOILET IN LESSON TIME?

You can normally only go to the toilet at break and lunch. However, if you have a toilet pass for medical reasons you will be allowed to go during lesson time.

CAN I RIDE MY BIKE TO SCHOOL?

Yes - you can come to school on your bike. As soon as you enter the school premises you must get off and push your bike to the bike sheds where you can lock it away safely until the end of the day.

We advise that you regularly get your bike breaks checked and that you wear a helmet when you are riding your bike for safety.



If you are going to be travelling by bus to school, you can find the bus timetables on the school website under 'Contact'.

Pupils should not arrive on site before 8.00am



PLANNERS

On your first day at Barr Beacon you will be issued with a planner.

You will use this to:

- Record a copy of your personal timetable.
- Make note of homework that is set and when it is due.
- Show your parents/carers what work is being set and pass messages to your Form Tutor.
- Record any detentions that might be set.
- Record any Catch Ups or Redo sessions with your teachers

Your parents/carers will sign your planner every week to show that they have seen all of your homework and to confirm that you have passed on any messages.

You will be able to collect praise points from your teachers and staff for your effort, behaviour and work as well as your contributions to school life

Praise will be recognised by your Form Tutor, Head of House and Leadership.

UNIFORM EXPECTATIONS

Black blazer (with school badge).

Black school trousers or black school skirt with school emblem only (no shorter than 5cm above the knee).

White polyester/cotton shirt (worn with school tie) with a top button. To be worn tucked into waistband of skirt or trousers.

House tie to be worn with 6 stripes visible.

Black socks or black tights (no patterns, frills or over knee socks).

Smart black polishable leather school shoes which are sensible and lightweight. Training shoes, canvas shoes and fashion boots are not acceptable.

Black 'v' neck sweater (optional). No cardigans.

Plain colour outer coat (not leather or denim).

Black, plain headscarves, wraps, bands, or hair clips/ornaments (must be tucked under blazers with the school tie visible).

The House tie, blazer badge and school skirts and trousers are available from Clive Mark, Crested School Wear and Uniform Plus or the school shop. Note: We do not have expensive designer variations on any standard uniform for any year group.

Coats must not be worn inside buildings and must be removed upon entry to any building. Hoods can only be worn up during adverse weather conditions.



More examples can be found on www.barrbeaconschool.co.uk/uniform

Bandanas are not permitted. One plain gold or silver stud earring in each ear lobe is permissible - no other jewellery is permitted.

No makeup may be worn by pupils in Years 7, 8 and 9. Pupils in Years 10 and 11 may wear discreet makeup. Hair colour and high fashion/cult hairstyles are not permitted. Shaved heads and shaved eyebrows are not permitted. There should be no patterns or lines in pupil's hair or eyebrows.

Any cult and other extreme of fashion, hairstyle or body marking/piercing is banned. False eyelashes, false nails and nail polish are not permitted in school.

Parents will be required to collect any confiscated items. If they are not collected within four weeks they will be disposed of by the school.

All pupils are expected to wear full school uniform at all times and their appearance should be appropriate to a working environment. Shirts must be tucked in, top buttons fastened and ties worn with six stripes.

Hoodies and tracksuit tops are not permitted and will be confiscated. Coats are not to be worn in the building.

Our uniform is stocked at Clive Mark, Uniform Plus and Crested School Wear.

WHAT ELSE CAN I EXPECT AT BARR BEACON?

Discovery Week



RAF CADET FORCE



House Sports



Duke of Edinburgh Award



Careers Fairs



Field Trips



International Trips



Charity Events





Barr Beacon School is
a proud member of
Matrix Academy Trust.



Old Hall Lane, Aldridge, Walsall,
WS9 0RF



postbox@barrbeaconschool.co.uk



0121 366 6600



www.barrbeaconschool.co.uk



@Barrbeaonsch