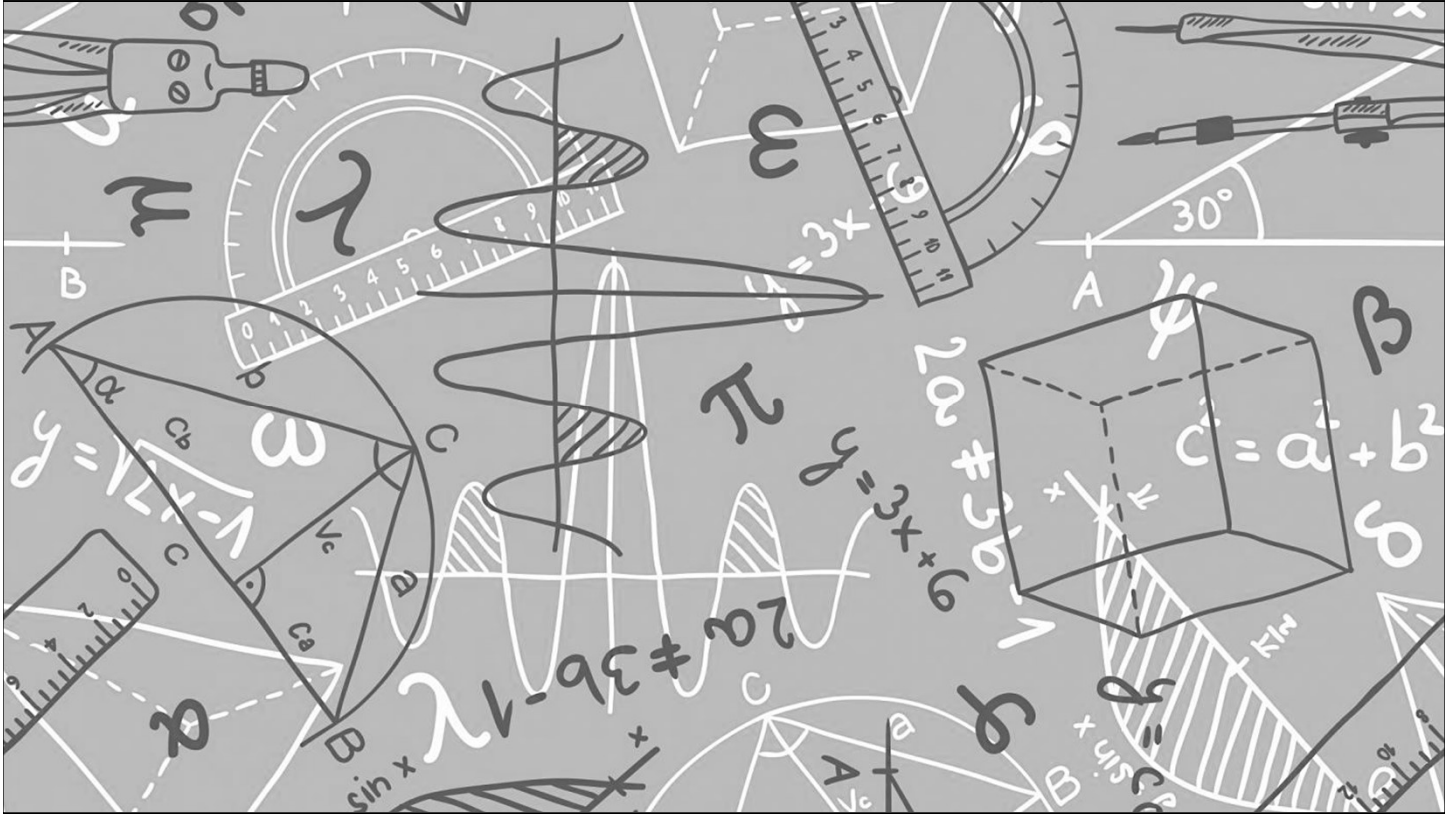


Maths



We can't wait to meet you...

All the Maths teachers at Barr Beacon School are very much looking forward to meeting you, normally during induction day you find out about us, we find out about you and together we do some Maths. Unfortunately we won't meet in person yet, however hopefully completing this booklet you will be able to find out some facts about the Maths teachers at Barr Beacon. You will also be able to do some research into some of our favourite mathematicians and do some maths either on your own or with someone else.

Meet the department...

In the Maths department we have 20 Maths Teachers. Throughout this booklet you will find out about some of our favourite Maths related things. Come back to this page to fill those in, can you find them all?

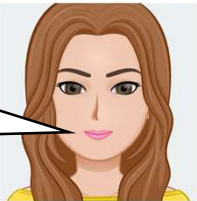
MR J DAVIES



Favourite Number:

Favourite Mathematician:

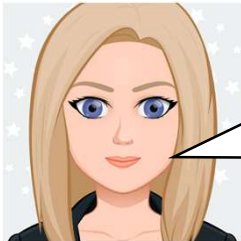
MISS EVERTON



Favourite Number:

Favourite Mathematician:

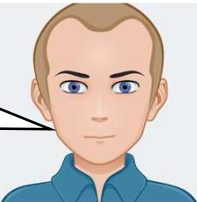
MISS TROUT



Favourite Number:

Favourite Mathematician:

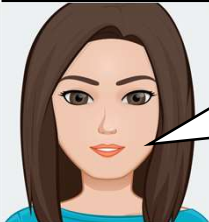
MR P DAVIES



Favourite Number:

Favourite Mathematician:

MISS POYNTON



Favourite Number:

Favourite Mathematician:

MR KILVERT



Favourite Number:

MR SMITH



Favourite Number:

Favourite Mathematician:

MR UPPAL



Favourite Number:

Favourite Mathematician:

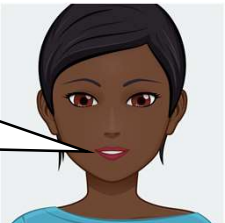
MR FINCH



Favourite Number:

Favourite Mathematician:

MRS CHAPPELL



Favourite Number:

Favourite Mathematician:

Meet the department...

In the Maths department we have 20 Maths Teachers. Throughout this booklet you will find out about some of our favourite Maths related things. Come back to this page to fill those in, can you find them all?

MISS BEDDOWS



Favourite Number:

Favourite
Mathematician:

MISS BEARDS

Favourite Number:

MISS GIVANS



Favourite Number:

MR BEST

Favourite Number:

Favourite
Mathematician:



MRS OSBORNE



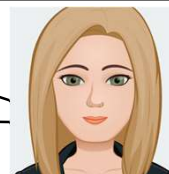
Favourite Number:

Favourite
Mathematician:

MRS GUMBLEY

Favourite Number:

Favourite
Mathematician:



MISS LLOYD



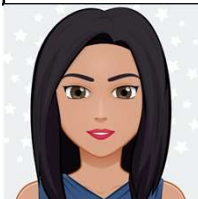
Favourite Number:

MISS THOMPSON

Favourite Number:



MRS THIND



Favourite Number:

Favourite
Mathematician:

MISS TAYLOR

Favourite Number:

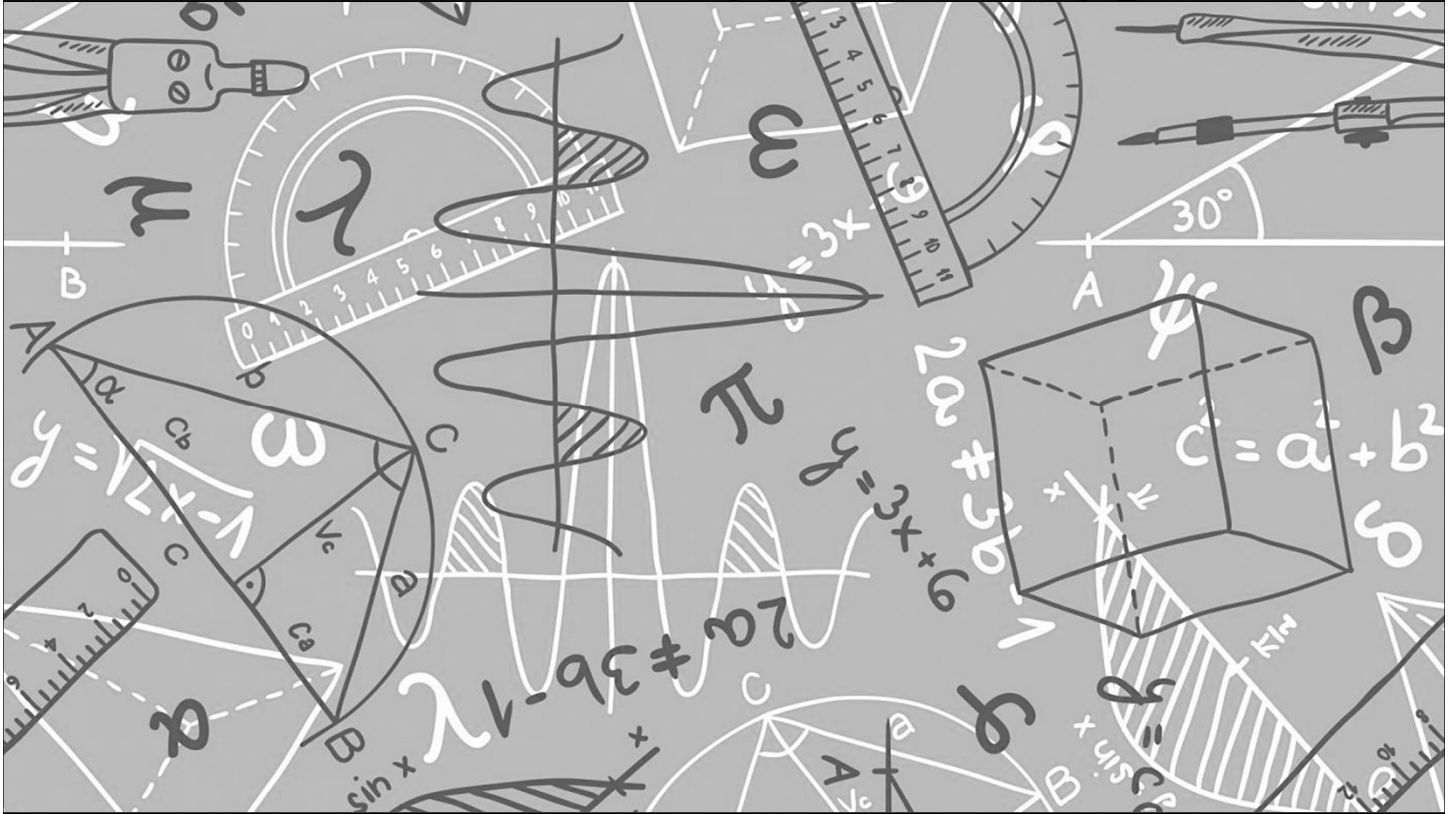
Favourite
Mathematician:



What is the sum of the maths departments favourite numbers?



Numeracy Ninjas



We have set up a numeracy ninjas kahoot quiz...

We have set up a kahoot quiz for you to have a go at based on numeracy ninjas which you will complete during Year 7 and Year 8 lessons at Barr Beacon School.

To access go to <https://kahoot.it/> and use the Game PIN: **07050697**
(The kahoot is live until 20th July)



The 24 game...

Try this with
your family –
who is the
quickest?

One of our favourite things to do on transition is to play the 24 game. The aim of the game is to be the first person to make the number 24.

For each game you have 4 numbers, you have to use **ALL** four numbers, you can add, subtract, multiply or divide these to make 24.

Example:



2 2 6 8

To make 24, I can do $(8 - 2) \times (6 - 2)$

$$8 - 2 = 6$$

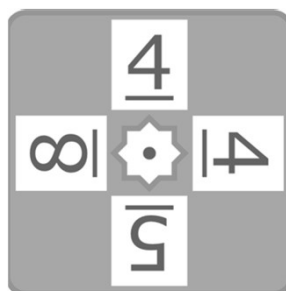
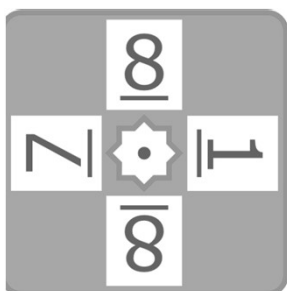
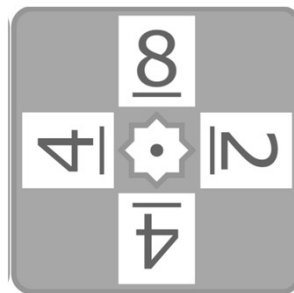
$$6 - 2 = 4$$

$$6 \times 4 = 24$$

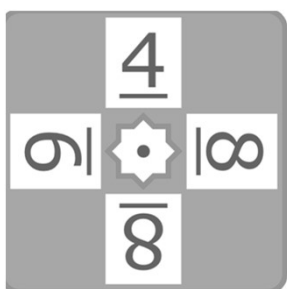
Miss Taylor's
favourite number is
the sum of 5 and 6

ONE DOT - EASIEST

Now it's your turn, the 24 cards are below they get harder as you go



Miss Thompson's
favourite number is
ten squared

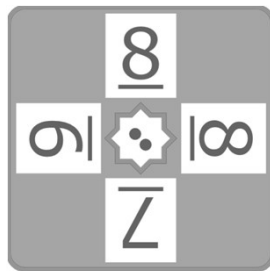
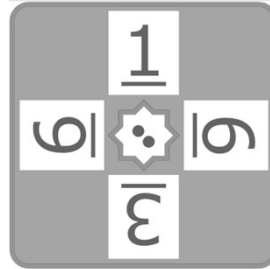


Miss Everton's
favourite number is
 3×6

The 24 game...

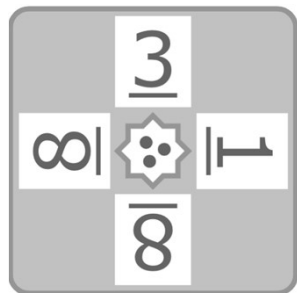
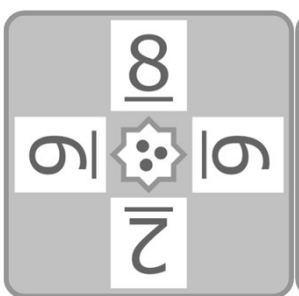
TWO DOT - MEDIUM

Mr P Davies
has a favourite
number which
is $5678 - 5000$

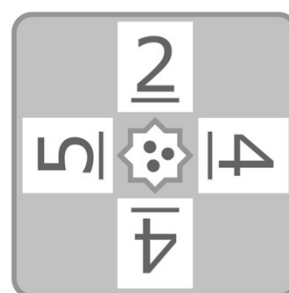


THREE DOT - HARDER

Mrs Gumbley's
favourite
number is the
only even
prime number



Miss Givans's
favourite
number is the
same as Mr J
Davies



Miss Trout's
favourite
number is
3000 - 197

Key Skills...

Mrs Osborne's
favourite
number is 5×2

When you get to a page like this, spend 10 minutes completing the skills check questions based on topics from Y6.

Question 1 Write in figures : thirteen thousand, five hundred and two units	Question 2 Write in figures : seventy seven thousand, eight tens and three units	Question 3 List the factors of 51	Question 4 List the factors of 36
Question 5 Work out $7 \times 10 =$	Question 6 Work out $10 \times 10 =$	Question 7 Simplify $\frac{8}{16}$	Question 8 Simplify $\frac{12}{42}$
Question 9 Find 50% of £180	Question 10 Find 25% of £120	Question 11 Round 2084 to the nearest 100	Question 12 Round 3372 to the nearest 10
Question 13 Work out $86 \times 8 =$	Question 14 Work out $630 \times 9 =$	Question 15 Simplify $5c + 5c + 6c$	Question 16 Simplify $10a + 2b + 8a + 7b$
Question 17 Work out $39253 + 15736 =$	Question 18 Work out $30730 + 18364 =$	Question 19 Work out $8 \times 2 - 5$	Question 20 Work out $6 + 11 \times 3$

SKILLS CHECK

Score

www.mathsbox.org.uk

Mrs Thind's favourite Mathematician is Fibonacci who was an Italian man who studied math and theories back in the 11th century. He discovered a pattern called the Fibonacci sequence. It's a series of numbers that starts with 0 and 1, and each number after is found by adding the two previous numbers (0, 1, 1, 2, 3, 5...) The sequence just keeps going on and on.

Can you find the first 10 numbers in the sequence?

Miss
Beddows's
favourite
mathematician
is Georg Cantor

Mrs Thind's
favourite
number is the
cube of 2

Mr P Davies's
favourite
mathematician
is Sir Isaac
Newton

Maths Keywords...

Can you find all the keywords you will need for your first half term at Barr Beacon School?

Y R Y A P F F T Z P M M D Q U M Z L N U
F I J X F U D M E E B U D O N D I M X E
B D P J B K C D B R U F I H I B Y V W J
C K H U T U G Z I I Z M D L T V F S F S
Y P I Z P L N M G M I Q A W S Y V D R Q
H X A T M Y K O P E L S Q W R E P E W K
C O D K Q I A Q D T C T E E S M H R U T
P L A C E V A L U E G Q B T D Z D D M J
J V B S H U K I N R S M D D A T M N K N
Z T R K F S L D L P U C M M N M O U G M
W O O Z D A I P C N R Q E X Z P I H J M
E M N T M N V Y E C C C Q N A R J T Q N
U K E I G T V R C F R N B H D Q H Z S X
P N C X A U A L G N S L B W V I D I D E
S E T F O U K L W Q C T I R Q N N P N E
D Z J D Q P T C A R T B U S O R K G B F
F V N S N I T G B P K G L R W U D J R V
O F V S G P O L Y G O N Q I X R N R O L
O U J V F K T B N Q V Z U D U V A D K O
E L E F T K D W E F Y A C L J T J N R L

Mr J Davies
and Mr
Smith have
a favourite
number of
 $3 \times 3 - 2$

ADD
ASCENDING
DECIMAL
DESCENDING
ESTIMATE
HUNDREDS
PERIMETER

PLACEVALUE
POLYGON
ROUND
SQUARENUMBER
SUBTRACT
TENS
UNITS

Miss Poynton's
favourite
mathematician
is Ada Lovelace

Mr Best's favourite mathematician Leonhard **Euler** (pronounced Oiler) (April 15, 1707 – September 7, 1783) was a Swiss mathematician and physicist. He spent most of his life in Russia and Germany. **Euler** made important discoveries in fields like calculus and topology. He also made many of the words used in math today.

Mr Kilvert's Favourite Number

Mr. Kilvert has set you a puzzle to find his favourite number. Below the grid you will find some clues. Can you work out Mr Kilvert's favourite number?

1	2	3	4	5	6	7	8	9	10
11	12	13	14	15	16	17	18	19	20
21	22	23	24	25	26	27	28	29	30
31	32	33	34	35	36	37	38	39	40
41	42	43	44	45	46	47	48	49	50
51	52	53	54	55	56	57	58	59	60
61	62	63	64	65	66	67	68	69	70
71	72	73	74	75	76	77	78	79	80
81	82	83	84	85	86	87	88	89	90
91	92	93	94	95	96	97	98	99	100

Guess my number 1

The number is a multiple of 3

ATM

Guess my number 1

The digital sum is 6

ATM

Guess my number 1

Find the number between 1 and 99

ATM

Guess my number 1

It is more than 5 squared

ATM

Guess my number 1

One of the digits is a 2

ATM

Guess my number 1

It is less than 55

ATM

Guess my number 1

It is not a square number

ATM

Key Skills...

Miss Poynton's favourite number is the first perfect number

When you get to a page like this, spend 10 minutes completing the skills check questions based on topics from Y6.

Name :

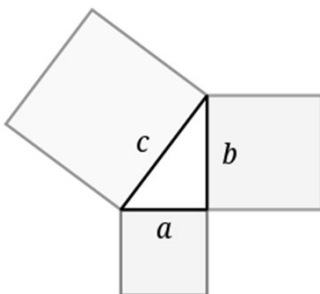
61.2

Question 1 Write in figures : six thousand, four tens and six units	Question 2 Write in figures : One hundred and twenty six thousand, nine tens and three units	Question 3 List the factors of 30	Question 4 List the factors of 20
Question 5 Work out $306 \times 1000 =$	Question 6 Work out $34 \times 1000 =$	Question 7 Simplify $\frac{20}{70}$	Question 8 Simplify $\frac{18}{63}$
Question 9 Find 75% of £720	Question 10 Find 75% of £500	Question 11 Round 6199 to the nearest 100	Question 12 Round 2096 to the nearest 1000
Question 13 Work out $77 \times 9 =$	Question 14 Work out $397 \times 6 =$	Question 15 Simplify $9x + 4x - 3x$	Question 16 Simplify $10a + 3b + 7a + 6b$
Question 17 Work out $37959 + 32050 =$	Question 18 Work out $24509 + 19451 =$	Question 19 Work out $5 \times 2 + 2$	Question 20 Work out $5 \times 4 + 3$

SKILLS CHECK

Score

www.mathsbox.org.uk



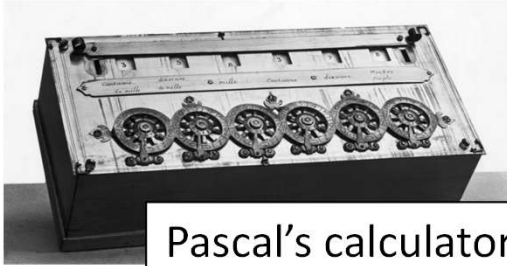
Miss Everton's and Miss Trout's favourite mathematician

Pythagoras of Samos was a famous Greek mathematician and philosopher (c. 570 – c. 495 BC). He is known best for the proof of the important Pythagorean theorem, which is about right angled triangles. He started a group of mathematicians, called the Pythagoreans, who worshiped numbers and lived like monks.

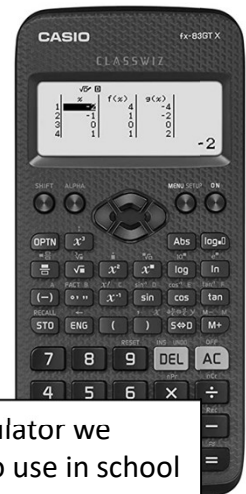
Can you find out what the Pythagorean theorem is? You will use it in Year 9.

The calculator transformation..

Blaise Pascal, in his short 39 years of life, made many contributions and inventions in several fields. He is well known in both the mathematics and physics fields. In mathematics, he is known for contributing Pascal's triangle and probability theory. He also invented an early digital calculator and a roulette machine.



Pascal's calculator



The calculator we recommend to use in school

The modern calculator can now be found everywhere, both mini and large versions and is embedded into devices such as laptops and mobile phones. How many devices that have calculators can you find in your house?

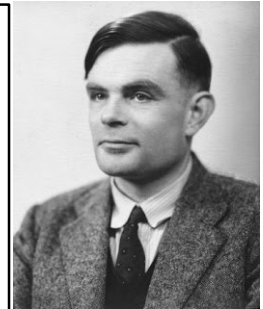
Mr J Davies's and Miss Taylor's favourite mathematician

Code Breaking...

Mrs Chappell's favourite number is the only even prime number squared

Alan Turing

Alan Turing was a British mathematician. He made major contributions to the fields of mathematics, computer science, and artificial intelligence. He worked for the British government during World War II, when he succeeded in breaking the secret code Germany used to communicate.



In September 1939 Great Britain went to war against Germany. During the war, Turing worked at the Government Code and Cypher School at Bletchley Park. Turing and others designed a code-breaking machine known as the Bombe. They used the Bombe to learn German military secrets. By early 1942 the code breakers at Bletchley Park were decoding about 39,000 messages a month. At the end of the war, Turing was made an Officer of the Most Excellent Order of the British Empire.

Can you crack the code to reveal the 3 Maths teachers who's favourite mathematician is Turing along with Mrs Gumbley's and Mr Finch's?

A	B	C	D	E	F	G	H	I	J	K	L	M
55	47	84	10	9	75	59	64	32	15	23	50	26
N	O	P	Q	R	S	T	U	V	W	X	Y	Z
80	63	19	3	27	30	21	92	18	35	99	69	199

$40 - 10 =$	
$16 + 10 =$	
$64 \div 2 =$	
$7 \times 3 =$	
$8 \times 8 =$	

$9 \times 7 =$	
$3^3 + 3 =$	
$50 - 3 =$	
$31 + 32 =$	
$108 \div 4 =$	
$100 - 20 =$	
$3^2 =$	

$9 \times 10 + 2 =$	
$10 + 9 =$	
$20 - 1 =$	
$11 \times 5 =$	
$150 \div 3 =$	

Can you make up some calculations to spell out your name using the same code breaker grid?

Can you make up your own message for a friend to decode?

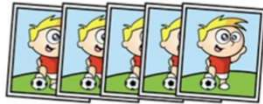
Maths Challenges...

Miss
Beddows's
favourite
number is 120
divided by 10

Can you solve all the Maths challenges?
They get more difficult as you go through.

Stickers come in packs of 5.

Max buys 12 packs.



He gave his three friends some stickers.

They each receive the same number.

He has 27 stickers left.

How many stickers did Max give each of his friends?

Here are 3 containers.



- The jug can hold **1500 ml**.
- The bucket can hold **2 litres**.
- The barrel can hold **15 litres**.

Anisa wants to fill the barrel with water.

Find 2 ways that Anisa can fill the barrel using the jug and bucket.

Here is a 3 x 3 grid with some shapes in.

			108
			102
			95

Each shape represents a number.

The sum of each row is shown at the right of the table.

Find the value of each of the shapes.

Key Skills...

Mr Best's
favourite number
is 8×2

When you get to a page like this, spend 10 minutes completing the skills check questions based on topics from Y6.

Name :

61.5

Question 1 Write in figures : nineteen thousand, eight hundred and three units	Question 2 Write in figures : six thousand, eight tens and eight units	Question 3 List the factors of 99	Question 4 List the factors of 28
Question 5 Work out $96 \times 10 =$	Question 6 Work out $31 \times 100 =$	Question 7 Simplify $\frac{6}{33}$	Question 8 Simplify $\frac{6}{42}$
Question 9 Find 50% of £880	Question 10 Find 50% of £360	Question 11 Round 3291 to the nearest 10	Question 12 Round 1928 to the nearest 100
Question 13 Work out $86 \times 6 =$	Question 14 Work out $171 \times 2 =$	Question 15 Simplify $7y - 4y - 5y$	Question 16 Simplify $8a + 4b + 5a + 3b$
Question 17 Work out $12389 + 9125 =$	Question 18 Work out $29494 + 3633 =$	Question 19 Work out $34 - 3 \times 4$	Question 20 Work out $21 - 5 \times 2$

SKILLS CHECK

Score

www.mathsbox.org.uk

Mrs Chappell's
favourite
mathematician

René Descartes

Descartes is considered the father of modern philosophy, a key figure in the scientific revolution of the 17th Century, and a pioneer of modern mathematics. Many people also call him the father of analytic geometry, which connects the fields of algebra and geometry.

Maths Challenges...

Miss Lloyd's
favourite
number is the
9th odd number

Can you solve all the Maths challenges?
They get more difficult as you go through.

Connor has five times as much money as Jayden.

Connor gives some money to Jayden.

They now have £8.52 each.

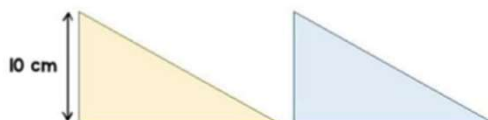
How much did Connor have at the start?

80 people take part in a race.

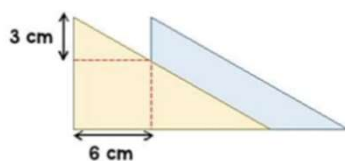
- The ratio of children to adults in the race is **2:3**.
- The mean time for the adults is **2 minutes 15 seconds**.
- The mean time for all 80 people is **3 minutes**.

Find the mean time for the children.

Here are two triangles identical in size.



The two triangles are overlapped.

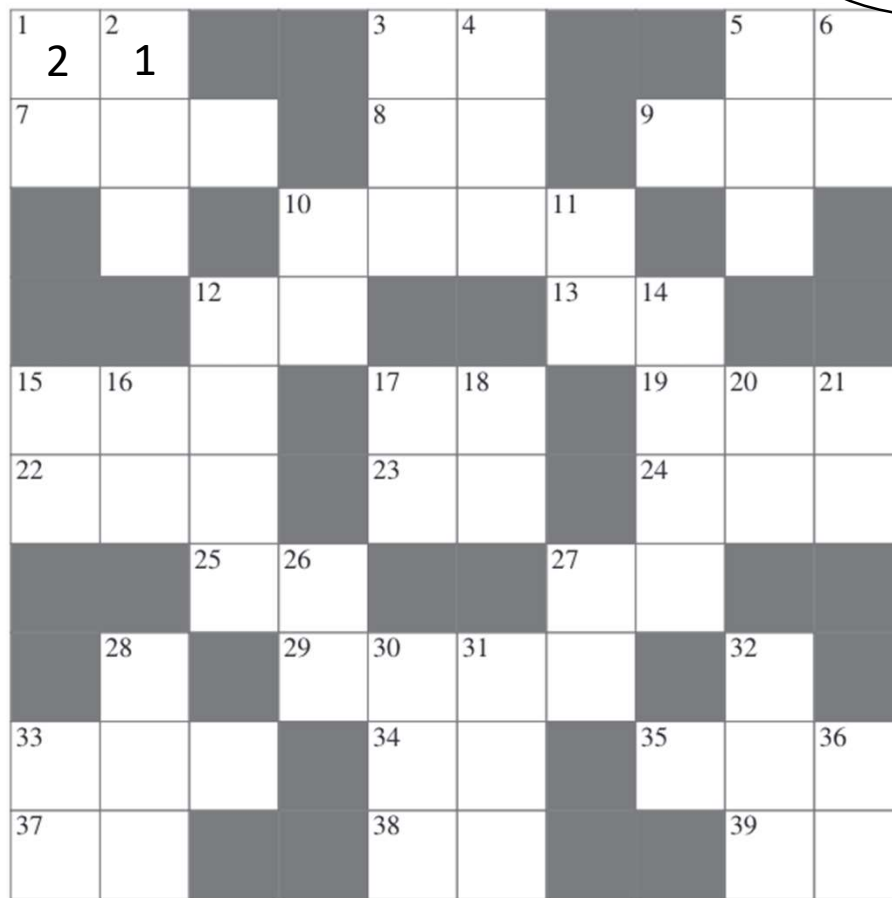


What is the area of the blue triangle showing?

Cross Number...

USE THE QUESTIONS BELOW TO COMPLETE THE CROSS NUMBER

Miss Beards has a favourite number which is the product of 3 and 5



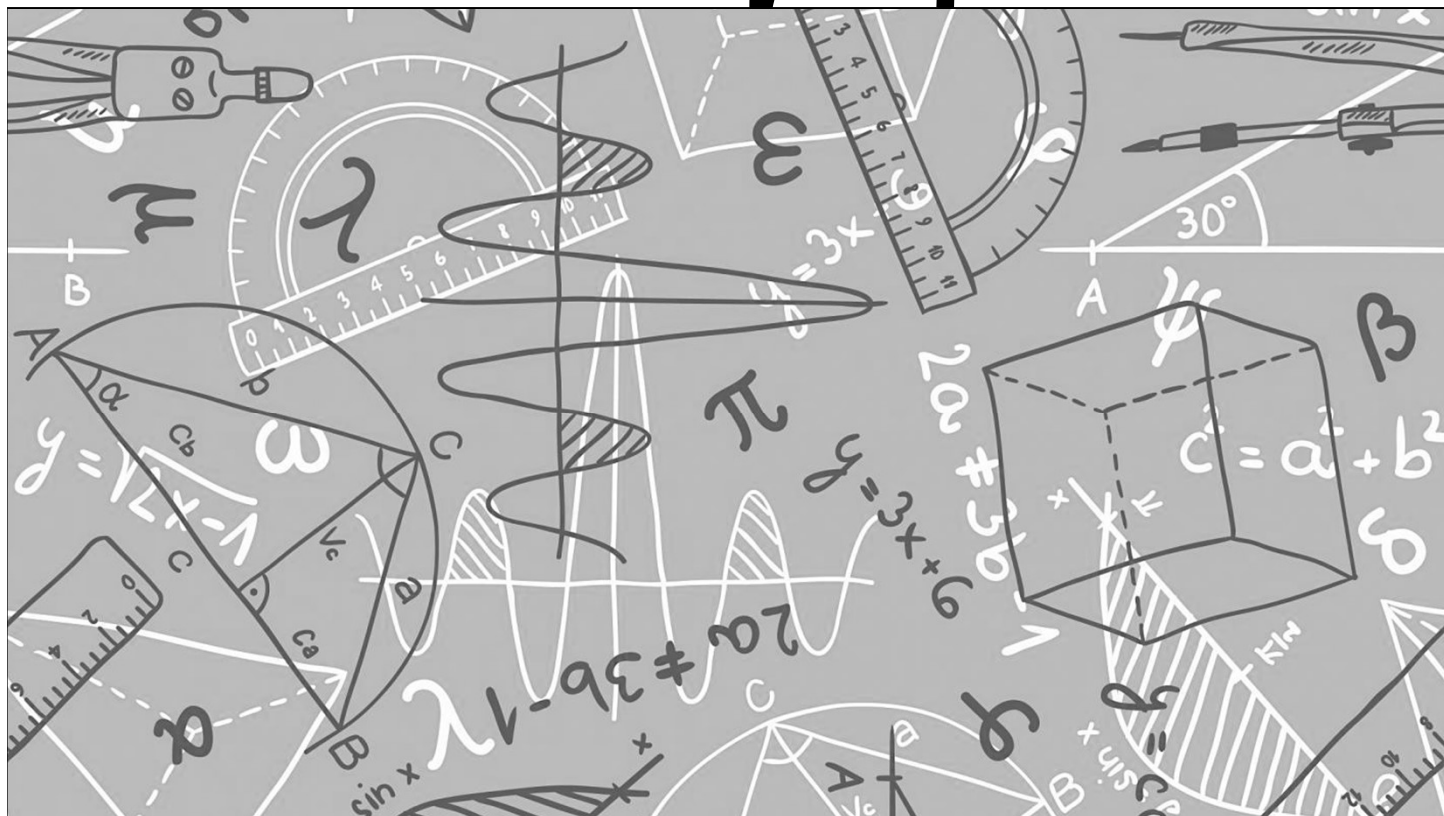
ACROSS

DOWN

- | | |
|--|--|
| 1. The number of spots on a standard dice (2) | 1. A prime number (2) |
| 3. The largest two-digit multiple of 13 (2) | 2. The sum of the first ten prime numbers (3) |
| 5. One more than 8 ACROSS (2) | 3. The number of hours in 39 days (3) |
| 7. One quarter of the square of 6 DOWN (3) | 4. $2 \times 2 \times 2 \times 2 \times 2 \times 2 \times 2$ (3) |
| 8. $2 \times 2 \times 2 \times 2 \times 2$ (2) | 5. 22 ACROSS + 28 DOWN (3) |
| 9. A cube number (3) | 6. The number of minutes in three-fifths of an hour (2) |
| 10. 15 ACROSS + 3 DOWN + 6 DOWN + 21 DOWN + 36 DOWN (4) | 10. A multiple of 7 (2) |
| 12. 39 ACROSS - 33 DOWN (2) | 11. 3×37 ACROSS (2) |
| 13. Twice (1 ACROSS + 1 DOWN) (2) | 12. $(22 \text{ ACROSS} - 6 \text{ DOWN}) \times 9$ (4) |
| 15. 1 DOWN \times 38 ACROSS (3) | 14. A number all of whose digits are the same (4) |
| 17. 36 DOWN - 8 ACROSS (2) | 15. A prime number (2) |
| 19. A square number (3) | 16. 27 ACROSS - 8 ACROSS (2) |
| 22. The smallest three-digit square number with all its digits different (3) | 17. A multiple of 9 (2) |
| 23. 1 ACROSS + 6 DOWN (2) | 18. A prime number (2) |
| 24. A multiple of 4 DOWN (3) | 20. A square number (2) |
| 25. 27 ACROSS + 37 ACROSS (2) | 21. The square of a square number (2) |
| 27. 39 ACROSS + 1 DOWN (2) | 26. 3×12 ACROSS (2) |
| 29. 200×12 ACROSS + 27 DOWN (4) | 27. Two-thirds of 36 DOWN (2) |
| 33. 10 times 2 dozen (3) | 28. 22 ACROSS - 1 DOWN (3) |
| 34. A square of a square number (2) | 30. 1 ACROSS \times 26 DOWN (3) |
| 35. 5×1 ACROSS + one-seventh of 12 ACROSS (3) | 31. 25 ACROSS + 4 DOWN + 5 DOWN (3) |
| 37. A half of 8 ACROSS (2) | 32. 17 DOWN + 27 ACROSS (3) |
| 38. A cube number (2) | 33. The sum of the digits of 1 DOWN, 17 ACROSS and 17 DOWN (2) |
| 39. One less than 6 DOWN (2) | 36. One and a half times 27 DOWN (2) |

Mr Uppal's favourite number is the difference between 13 and 30

Maths equipment



Remember . . .

When we meet you there will be some maths equipment which you will need for maths lesson all the way through to at least the end of Year 11:

- Calculator (scientific, we recommend the Casio fx-83gtx or fx-85gtx)
- Protractor (semi circle or full circle)
- Compass
- Pen
- Pencil
- Ruler

Mr Finch has a favourite number which is the sum of 1 and 3 cubed